

**STELLAR**  
LIVESTOCK



**2025 AUTUMN SALE**  
ON PROPERTY - MUDGEGONGA

**35 BULLS**

**11AM 13 MARCH 2025**

[stellarlivestock.com.au](http://stellarlivestock.com.au)

# SELLING AGENTS



**Nutrien Stud Stock Auctioneer**  
Peter Godbolt 0457 591 929

**Nutrien Ivone Agencies Livestock Agent**  
Dan Ivone 0427 480 548

## Your Nutrien Ivone Agencies Team

### Livestock Team

Dan Ivone	0427 480 548
Hayden Rogers	0428 990 231
Kevin Bromilow	0428 578 849
Laura Nankervis	03 5752 2271

### Property Management & Real Estate Team

Jess Harris	0428 484 866
Bernard Ivone	0428 522 572
Merchandise Farm Supplies	
Bernard Ivone	0428 522 572



### Office

17-19 Myrtle St Myrtleford 03 5752 2232  
myrtleford@nutrien.com.au



## ATTENTION BUYER

Animal details included in this catalogue, including but not limited to pedigree, DNA information, Estimated Breeding Values (EBVs) and Index values, are based on information provided by the breeder or owner of the animal. Whilst all reasonable care has been taken to ensure that the information provided in this catalogue was correct at the time of publication, Angus Australia will assume no responsibility for the accuracy or completeness of the information, nor for the outcome (including consequential loss) of any action taken based on this information.

# SALE INFORMATION

## SALE DAY

The bulls will be penned and available for viewing from 9am on sale morning. Inspection any other day is welcome at feeding time (by appointment).

The open-cry auction is conducted inside the marquee, interfaced with video footage of each bull on a large screen.

## VIDEOS

Videos of every lot will be available via our website, our YouTube Chanel and Angus Australia's angus.tech.

## ONLINE BIDDING

Online bidding is NOT available at our 2025 sale. Please contact Nutrien Myrtleford prior to sale day to arrange phone bidding.

## GST

The auction price is exclusive of GST. Eg if the bull is knocked down for \$4,000, you will be charged \$4,400.

## AGENT REBATES

A 2% commission rebate will be paid to Agents who introduce purchasers in writing and who settle within 7 days of invoice.

## FREIGHT

Stellar Livestock will cover the cost of freight for the first 300kms.

## INSURANCE

Insurance will be available to purchase from Nutrien on sale day.

## LUNCH

BBQ lunch will be available from 12pm.

## SALE PEN SAFETY

Enter bull pens at your own risk. We suggest you take advantage of the laneways around each pen or ask a Nutrien or Stellar team member to assist. No children under 16 may enter. Please refrain from forcing a single bull away from his mates.



## OUR GUARANTEE

Stellar Livestock bulls are guaranteed fertile and structurally capable of service. In the event that a warranty is claimed, we will:

1. Exchange the bull with a satisfactory substitute if available, or
2. Issue a sale credit equal to the residual value\*, less salvage value. See below

The guarantee covers the purchase value of the bull, without interest, cost and damages. The guarantee does not cover any incapacity caused by injury or disease contracted since leaving Stellar Livestock.

A veterinary certificate must be supplied by the purchaser on request.

\*The residual value is calculated on the basis that the value reduces by one third of the purchase price for each year of service from the sale date.

Please don't hesitate to contact us to discuss any concerns you have about your bull team.

## MANAGING YOUR BULLS

Stellar Livestock bulls are known for their excellent docility. We achieve this with a combination of genetic selection and gentle handling. It is important to note that sale day, transport, separation from their mob and unfamiliar surroundings place a level of acute stress far greater than anything else they've ever experienced. This is particularly important to manage when a single bull has been purchased.

Animals have the capacity to recover from acute stress as long as it is not prolonged. **It is essential to unload any single bull purchases into the company of other cattle.**

Running a new bull with unfamiliar bulls of similar age and weight is very risky. The risk may be reduced somewhat by running the bulls in neighbouring paddocks for 1-2 weeks before mixing.

Protect your bulls (and herd fertility) with an inexpensive annual program of:

- Vaccination boosters for vibriosis, BVDV (pestivirus) and clostridial disease (5-in-1)
- Worm drench
- Annual Bull Breeding Soundness Exam (BBSEs)



**It is essential to unload any single bull purchases into the company of other cattle.**



# QUALITY ASSURANCE

- DNA parent verification
- TACE performance recording
- Genomics
- HBR or APR registration
- Independent structural assessment
- BBSE Vet check
- Free of known genetic disorders
- BVDV PI screening
- Pestiguard, Vibrovac and Ultravac 7-in-1 vaccinations
- Antiparasitic combinations/rotations including ML, BZ, LEV, Triclabendazole, Clorsulon, and Nitroxynil
- Freeze brand, NLIS tag and 2 x management tags
- Grass finishing

**WHAT'S  
BEHIND  
EACH  
STELLAR  
BULL?**

# ABOUT STELLAR LIVESTOCK

Stellar Livestock is based in Mudgegonga, 50kms South of Albury Wodonga. The seedstock business was established in 2011 and was formerly known as Black Star Angus, however the Carroll family's involvement in Angus goes back to the 1930's. Stephen and Kathryn Carroll joined Julian and Sally in the business in 2022 which saw the re-branding to Stellar Livestock.

Much of Stellar Livestock operates on property first purchased by the family in the 1870s. Running in parallel to the seedstock operation is a commercial enterprise, producing steers for the high marbling feedlot market as well as annual drafts of PTIC heifers and young cows.

The Carroll family's commercial enterprise is consistently one of most profitable businesses in the industry benchmarking program, Livestock Farm Monitor Project (LFMP). The firm focus on commercial profitability underpins the breeding objectives of the seedstock business. These objectives primarily combine maternal efficiency with high value market access.

After a decade of paddock sales, Stellar Livestock switched to on-property auctions in 2023. Subsequent sales have been pleasing for all involved with excellent value continuing to be a feature at Stellar Livestock. More than half the offering is typically sold with one bid at the opening reserve while the price for the in-demand bulls is set at a fair market value when pursued by multiple bidders.

The 2025 line-up includes a mix of new and revisited sires.

- 20 bulls with IMF in top 25%
- 10 bulls with IMF in top 10%
- 19 bulls suitable for heifers
- 15 bulls with a top 25% index
- 14 bulls with top 25% growth EBVs
- 11 bulls in the top 25% for the new Mature Cow Body Condition (MBC) EBV

We look forward to seeing you at the 2025 Autumn Sale.



# NEW EBVS FOR MATERNAL EFFICIENCY

One of the core breeding objectives at Stellar Livestock, maternal efficiency, is all about making sure a breeding enterprise is economical. In a self-replacing herd, it's estimated that 75% of the grass grown goes toward maintaining the cow herd. That only leaves us with a quarter of our pasture productivity to produce a saleable product.

There is a tendency for some cattle breeders to focus too singularly on growth traits. Selecting high growth sires can have unintended consequences. Birth weight and mature cow weight are intrinsically correlated to growth traits. High growth genetics need more feed to achieve the extra kilograms. The Dairy Industry figured this out long ago: Increased output demands an increase in inputs, and grass is not an infinite resource. If you were to upgrade your four cylinder car to a V8, you'd also have to increase your fuel budget.

Big cows also tend to have a later maturity pattern which means heifers reach puberty later. And, in tough seasons, big cows are the first to fall into an energy deficit. In this situation the first function to shut down is reproduction.

Body composition is also an important factor: We are learning that muscle is a better energy reserve than fat as we can build muscle more efficiently than fat. It's also worth noting that rib and rump fat EBVs describe yearling animals and are only weakly correlated to mature cow condition.

The trend of using positive fat EBVs as a proxy for 'doability' – the ability for our cows to gain and maintain condition – has proved to be only



Pictured: Murdeduke Jemma L123

minimally effective at improving a herd's body condition while significantly reducing the pool of bulls for breeders to choose from.

Naturally, we are very pleased with the new EBVs recently launched that better describe mature cow composition traits.

Mature Cow Body Condition (MBC) is derived from mature cow condition scoring (rather than young animals) so it's certainly more fit-for-purpose when it comes to describing the 'doability' of our breeding herd. Also, we can now tease apart Mature Cow Weight (MCW) from Mature Cow Body Condition and Mature Cow Height (MCH). These tools will certainly help both seedstock and commercial breeders to identify the genetics that drive maternal efficiency.

In 2021 Stellar Livestock purchased the top-priced cow at the Matrons of Murdeduke sale. Our first sons of Jemma L123 are offered at this sale. *See lots 4,5, and 15.*

L123 combines moderately heavy Mature Cow Weight, with top 20% Body Condition and breed-average cow height.

## TOP TIPS: SELECTING FOR MATERNAL EFFICIENCY

When selecting herd bulls:

1. Make sure MCW is less than 600D (the closer to 400D the better)
2. Avoid extremes in Maternal traits (not too fat/lean or too tall/small)
3. Avoid very high Milk if you are Spring calving in the high rainfall zone (too much milk can be a bad thing)

Below: Maternal EBVs for Murdeduke Jemma L123

	Maternal			
	Mature Cow Weight	Mature Cow Condition	Mature Cow Height	Milk
EBV	+113	+0.41	+8.5	+14
Perc	33	19	47	78

# REFERENCE SIRES



## STELLAR QUICKSILVER

Quicksilver combines strong growth in an efficient maternal package. Add to that: huge IMF, Eye Muscle and superb docility.

8 sons sell.

BWT: +4.3	400D: +106	MCW: +101
DOC: +41	IMF: +5.0	EMA: +13.0



## LAWSONS ROCKY

Rocky possesses an excellent combination of calving ease, growth, maternal, fertility and carcass traits.

6 sons sell.

BWT: +2.5	400D: +98	MCW: +95
IMF: +4.6	EMA: 11.3	\$A: \$260



## MOOGENILLA QUINELLA

Quinella blends calving ease with performance, moderate mature cow weight, docility and carcass quality.

4 sons sell.

BWT: +3.9	400D: +116	MCW: +85
IMF: +4.9	CW: +99	\$A: \$274



## RENNYLEA L519

L519 has unparalleled structural soundness for a sire that also offers excellent carcass genetics. L519 excels at the new Mature Cow Body Condition (MBC) trait.

3 sons sell.

IMF: +5.0	EMA: +8.1	MBC: top 4%
Claw: top 3%	Angle: top 6%	Leg: top 20%



1 U110

STELLAR FIVE1NINE MOMENTOUS U110

JCA23U110 06/08/2023 PV ET HBR



Very attractive long bodied sire with terrific carcase traits. Top 3% IMF and top 15% \$A, Top 8% \$GN, suitable for heifers.

♂ H P C A INTENSITY

SIRE: RENNYLEA L519

♂ RENNYLEA H414

♂ LAWSONS MOMENTOUS M518

DAM: STELLAR MITTAGONG MOMENTOUS Q15

♂ STELLAR MITTAGONG PROPHET N20

	CALVING				GROWTH			MATERNAL				FERTILITY		CARCASE			
TRAIT	CE DIR	CE DTR	GL	BWT	200	400	600	MCW	MBC	MCH	MILK	SS	DTC	IMF	EMA	RIB	CWT
EBV	+7.5	+7.3	-3.8	+3.4	+48	+88	+110	+88	+0.31	+9.0	+18	+0.2	-5.7	+5.7	+7.5	+2.6	+56
PERC	11	13	62	38	70	68	73	73	42	37	41	97	30	3	37	8	84

	PROFIT				
INDEX	\$A	\$D	\$GN	\$GS	\$T
VALUE	\$243	\$192	\$339	\$228	\$213
PERC	15	24	8	15	18

	DOCILITY		CLAW SHAPE		FOOT ANGLE		STRUCTURE			
OBS	DOC		FRONT	REAR	FRONT	REAR	SIDE	HIND	MUSC	SHTH
RAW	1		7	6	6	6	5	5	C+	4
EBV	+32		+0.84		+0.84		+0.90			
PERC	14		50		21		16			

Genetic Conditions: AMFU,CAFU,DDFU,NHFU

2 U14

STELLAR QUINELLA MILKY WAY U14

JCA23U14 03/08/2023 PV AI APR



Super thick bull with excellent calving ease and carcase traits. Top 13% \$A.

♂ G A R FAIL SAFE

SIRE: MOOGENILLA QUINELLA Q33

♂ MOOGENILLA N9

♂ STELLAR MILKY WAY L8

DAM: STELLAR SAN FRAN MILKY WAY Q23

♂ STELLAR SAN FRAN L23

	CALVING				GROWTH			MATERNAL				FERTILITY		CARCASE			
TRAIT	CE DIR	CE DTR	GL	BWT	200	400	600	MCW	MBC	MCH	MILK	SS	DTC	IMF	EMA	RIB	CWT
EBV	+6.3	+4.3	-2.5	+1.8	+48	+98	+124	+64	-0.15	+6.9	+26	+1.7	-3.6	+3.4	+7.4	+1.1	+75
PERC	19	42	80	11	66	35	42	95	99	77	4	67	78	27	38	26	32

	PROFIT				
INDEX	\$A	\$D	\$GN	\$GS	\$T
VALUE	\$245	\$197	\$334	\$231	\$211
PERC	13	19	10	14	19

	DOCILITY		CLAW SHAPE		FOOT ANGLE		STRUCTURE			
OBS	DOC		FRONT	REAR	FRONT	REAR	SIDE	HIND	MUSC	SHTH
RAW	1		7	6	7	6	5	5	C+	3
EBV	+8		+1.00		+0.96		+1.00			
PERC	93		79		49		42			

Genetic Conditions: AMFU,CAFU,DDFU,NHFU

KEY: Percentile Bands - Top

10% 25% 50% CE DIR or BWT

Traits Observed: (all bulls)  
200WT x 2, 400WT x 2, DOC, Genomics

Mid-February 2025  
TransTasman Angus  
Cattle Evaluation





One of the best all-rounders we've ever bred. Soft and muscled with a terrific spread of EBVs that lands him in the top 2% for most indexes. His dam has just been promoted to the donor team. U7 covered registered heifers in our AI program. He sells unencumbered (100% ownership) but we'd happily negotiate partial ownership to retain Spring walking rights if sold into an Autumn program.

♂ GAR FAIL SAFE

**SIRE: MOOGENILLA QUINELLA Q33**

↳ MOOGENILLA N9

♂ TE MANIA PARENTHESIS P446

**DAM: STELLAR PRINCESS PARENTHESIS S1**

↳ DUNOON PRINCESS Q456

	CALVING				GROWTH			MATERNAL				FERTILITY		CARCASE			
TRAIT	CE DIR	CE DTR	GL	BWT	200	400	600	MCW	MBC	MCH	MILK	SS	DTC	IMF	EMA	RIB	CWT
EBV	+8.8	+7.9	-6.4	+2.4	+54	+102	+135	+85	-0.01	+5.9	+30	+3.8	-7	+5.5	+5.7	+0.0	+90
PERC	5	9	22	19	39	26	22	78	98	90	1	8	11	3	59	50	7

	PROFIT				
INDEX	\$A	\$D	\$GN	\$GS	\$T
VALUE	\$275	\$216	\$374	\$268	\$231
PERC	2	6	2	2	4

	DOCILITY		CLAW SHAPE		FOOT ANGLE		STRUCTURE			
OBS	DOC	FRONT	REAR	FRONT	REAR	SIDE	HIND	MUSC	SHTH	
RAW	1	6	6	6	7	5	5	C+	5	
EBV	+16	+0.80		+0.90		+0.88				
PERC	70	41		34		13				

Genetic Conditions: AMFU,CAFU,DDFU,NHFU



Long and slick heifer bull with great IMF out of Jemma L123 (the sale-topping Murdeduke cow). We used U111 to back up our AI'd heifers. Top 10% indexes.

♂ GAR MOMENTUM

**SIRE: LAWSONS ROCKY R4010**

↳ LAWSONS JUDD P4005

♂ RENNYLEA EDMUND E11

**DAM: MURDEDUKE JEMMA L123**

↳ MURDEDUKE H209

	CALVING				GROWTH			MATERNAL				FERTILITY		CARCASE			
TRAIT	CE DIR	CE DTR	GL	BWT	200	400	600	MCW	MBC	MCH	MILK	SS	DTC	IMF	EMA	RIB	CWT
EBV	+4.7	+7.7	-9.8	+1.8	+54	+104	+134	+123	+0.61	+9.4	+17	+1.3	-7.5	+4.8	+6.5	+1.7	+77
PERC	33	10	2	11	38	22	23	21	2	30	55	80	7	7	49	17	26

	PROFIT				
INDEX	\$A	\$D	\$GN	\$GS	\$T
VALUE	\$252	\$207	\$336	\$240	\$222
PERC	10	11	9	9	9

	DOCILITY		CLAW SHAPE		FOOT ANGLE		STRUCTURE			
OBS	DOC	FRONT	REAR	FRONT	REAR	SIDE	HIND	MUSC	SHTH	
RAW	2	6	7	6	7	5	5	C	3	
EBV	+4	+1.10		+1.12		+1.22				
PERC	97	91		83		94				

Genetic Conditions: AMFU,CAFU,DDFU,NHFU

KEY: Percentile Bands - Top

10% 25% 50% CE DIR or BWT

Traits Observed: (all bulls)  
200WT x 2, 400WT x 2, DOC, Genomics

Mid-February 2025  
TransTasman Angus  
Cattle Evaluation





Another Jedda L123 son, he's thick and soft with top 5% 400D growth. Top 15% indexes. Great structurally in both his raw scores and EBVs. U106 backed up our cows AI program. Note: We removed a corn from his front left foot 6/2/2025.

♂ GAR FAIL SAFE

**SIRE: MOOGENILLA QUINELLA Q33**

♂ MOOGENILLA N9

♂ RENNYLEA EDMUND E11

**DAM: MURDEDUKE JEDDA L123**

♂ MURDEDUKE H209

	CALVING				GROWTH			MATERNAL				FERTILITY		CARCASE			
TRAIT	CE DIR	CE DTR	GL	BWT	200	400	600	MCW	MBC	MCH	MILK	SS	DTC	IMF	EMA	RIB	CWT
EBV	-0.1	+4.7	-6.1	+5.6	+62	+116	+148	+126	+0.29	+8.8	+14	+3.2	-4.4	+3.4	+10.6	-2.2	+97
PERC	74	37	26	84	11	5	7	17	48	42	75	17	60	27	12	91	3

	PROFIT				
INDEX	\$A	\$D	\$GN	\$GS	\$T
VALUE	\$243	\$203	\$322	\$231	\$228
PERC	15	14	15	14	5

	DOCILITY		CLAW SHAPE		FOOT ANGLE		STRUCTURE			
OBS	DOC	FRONT	REAR	FRONT	REAR	SIDE	HIND	MUSC	SHTH	
RAW	1	6	6	5	6	5	5	C+	5	
EBV	+26	+0.64	+0.90	+0.94						
PERC	30	14	34	25						

Genetic Conditions: AMFU,CAFU,DDFU,NHFU

Withdrawn

♂ LAWSONS MOMENTOUS M518

**SIRE: STELLAR QUICKSILVER Q7**

♂ STELLAR VICKY PROPHET N9

♂ STELLAR SUMO P4

**DAM: STELLAR BARUNAH SUMO R58**

♂ STELLAR BARUNAH PROPHET N13

	CALVING				GROWTH			MATERNAL				FERTILITY		CARCASE			
TRAIT	CE DIR	CE DTR	GL	BWT	200	400	600	MCW	MBC	MCH	MILK	SS	DTC	IMF	EMA	RIB	CWT
EBV	-1.1	+2.1	-4.1	+4.4	+65	+108	+139	+120	+0.48	+8.4	+16	+1.3	-4.1	+4.9	+12.6	-2.9	+87
PERC	80	65	57	61	6	13	15	23	9	49	61	80	67	7	5	96	10

	PROFIT				
INDEX	\$A	\$D	\$GN	\$GS	\$T
VALUE	\$257	\$205	\$357	\$241	\$238
PERC	7	13	4	8	2

	DOCILITY		CLAW SHAPE		FOOT ANGLE		STRUCTURE			
OBS	DOC	FRONT	REAR	FRONT	REAR	SIDE	HIND	MUSC	SHTH	
RAW	1	7	8	7	7	4	5	C+	4	
EBV	+18	+0.90	+0.62	+0.94						
PERC	62	62	2	25						

Genetic Conditions: AMFU,CAFU,DDFU,NHFU

KEY: Percentile Bands - Top

10% 25% 50% CE DIR or BWT

Traits Observed: (all bulls)  
200WT x 2, 400WT x 2, DOC, Genomics

Mid-February 2025  
TransTasman Angus  
Cattle Evaluation



7 U31

STELLAR FIVE1NINE PROPHET U31

JCA23U31

09/08/2023

PV

AI

HBR



Great type, moderate and quiet. Terrific structure and performance. Top 7% indexes.

♂ H P C A INTENSITY

**SIRE: RENNYLEA L519**

↳ RENNYLEA H414

♂ G A R PROPHET

**DAM: STELLAR MITTAGONG PROPHET R1**

↳ ABERDEEN ESTATE MITTAGONG H130

	CALVING				GROWTH			MATERNAL				FERTILITY		CARCASE			
TRAIT	CE DIR	CE DTR	GL	BWT	200	400	600	MCW	MBC	MCH	MILK	SS	DTC	IMF	EMA	RIB	CWT
EBV	+1.8	-4.2	-3	+5.6	+63	+112	+150	+132	+0.33	+8.7	+22	+2.5	-7.9	+3.8	+4.9	+1.7	+82
PERC	60	96	74	84	9	9	6	12	36	43	15	37	4	20	69	17	17

	PROFIT				
INDEX	\$A	\$D	\$GN	\$GS	\$T
VALUE	\$257	\$208	\$339	\$245	\$226
PERC	7	11	8	7	6

Genetic Conditions: AMFU,CAFU,DDFU,NHFU

	DOCILITY		CLAW SHAPE		FOOT ANGLE		STRUCTURE			
OBS	DOC	FRONT	REAR	FRONT	REAR	SIDE	HIND	MUSC	SHTH	
RAW	1	6	5	6	5	5	5	C+	4	
EBV	+31	+0.72	+0.64	+1.00						
PERC	16	25	2	42						

8 U121

STELLAR QUARTERBACK ALL IN U121

JCA23U121

22/07/2023

PV

ET

HBR



Slick and long bull with curve bending EBVs and top 7% IMF. Has some white on his sheath.

♂ LAWSONS MOMENTOUS M518

**SIRE: MURDEDUKE QUARTERBACK Q011**

↳ MURDEDUKE BARUNAH N026

♂ DEER VALLEY ALL IN

**DAM: STELLAR BLACKBIRD ALL IN N18**

↳ STRATHEWEN RNB BLACKBIRD L01

	CALVING				GROWTH			MATERNAL				FERTILITY		CARCASE			
TRAIT	CE DIR	CE DTR	GL	BWT	200	400	600	MCW	MBC	MCH	MILK	SS	DTC	IMF	EMA	RIB	CWT
EBV	+6.1	+4.8	-7.5	+1.0	+57	+110	+137	+103	+0.21	+11.9	+28	+2.8	-6.8	+4.9	+6.8	-1.3	+83
PERC	21	36	12	6	26	11	19	49	70	5	3	27	13	7	45	78	16

	PROFIT				
INDEX	\$A	\$D	\$GN	\$GS	\$T
VALUE	\$269	\$224	\$364	\$257	\$234
PERC	3	4	3	3	3

Genetic Conditions: AMFU,CAFU,DDFU,NHFU

	DOCILITY		CLAW SHAPE		FOOT ANGLE		STRUCTURE			
OBS	DOC	FRONT	REAR	FRONT	REAR	SIDE	HIND	MUSC	SHTH	
RAW	1	7	7	7	7	5	5	C+	5	
EBV	+24	+0.98	+1.14	+1.04						
PERC	39	76	86	55						

KEY: Percentile Bands - Top

10% 25% 50% CE DIR or BWT

Traits Observed: (all bulls)  
200WT x 2, 400WT x 2, DOC, Genomics

Mid-February 2025  
TransTasman Angus  
Cattle Evaluation



9 U129

STELLAR ROCKY DRAMBUIE U129

JCA23U129 25/07/2023 PV ET HBR



Big growth, muscle and testicles and very docile. Out of one of our much loved matrons.

♂ GAR MOMENTUM

**SIRE: LAWSONS ROCKY R4010**

♂ LAWSONS JUDD P4005

♂ VERMONT DRAMBUIE D057

**DAM: ABERDEEN ESTATE MITTAGONG H130**

♂ KO MITTAGONG C183

	CALVING				GROWTH			MATERNAL				FERTILITY		CARCASE			
TRAIT	CE DIR	CE DTR	GL	BWT	200	400	600	MCW	MBC	MCH	MILK	SS	DTC	IMF	EMA	RIB	CWT
EBV	+5.8	+0.7	-2.3	+5.1	+60	+108	+139	+146	+0.53	+10.0	+20	+3.3	-4.7	+2.2	+12.3	-0.5	+67
PERC	23	77	82	76	17	14	15	5	5	21	26	15	53	54	5	62	57

	PROFIT				
INDEX	\$A	\$D	\$GN	\$GS	\$T
VALUE	\$232	\$195	\$303	\$216	\$229
PERC	25	22	27	26	5

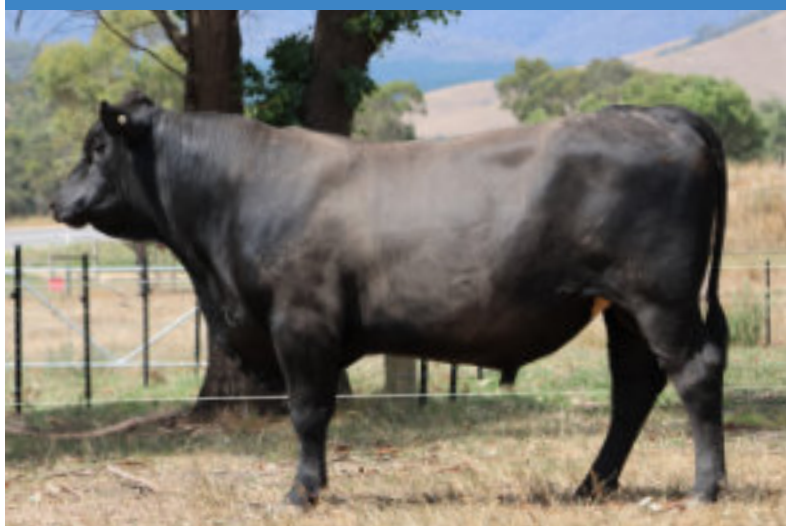
	DOCILITY		CLAW SHAPE		FOOT ANGLE		STRUCTURE			
OBS	DOC		FRONT	REAR	FRONT	REAR	SIDE	HIND	MUSC	SHTH
RAW	1		6	6	6	6	5	5	C+	4
EBV	+7		+0.88		+0.92		+1.00			
PERC	94		58		39		42			

Genetic Conditions: AMFU,CAFU,DDFU,NHFU

10 U125

STELLAR QUARTERBACK ALL IN U125

JCA23U125 24/07/2023 PV ET HBR



Long and sound bull with great birth to 600D spread.

♂ LAWSONS MOMENTOUS M518

**SIRE: MURDEDUKE QUARTERBACK Q011**

♂ MURDEDUKE BARUNAH N026

♂ DEER VALLEY ALL IN

**DAM: STELLAR BLACKBIRD ALL IN N18**

♂ STRATHEWEN RNB BLACKBIRD L01

	CALVING				GROWTH			MATERNAL				FERTILITY		CARCASE			
TRAIT	CE DIR	CE DTR	GL	BWT	200	400	600	MCW	MBC	MCH	MILK	SS	DTC	IMF	EMA	RIB	CWT
EBV	+2.8	+2.4	-6.1	+3.4	+64	+110	+150	+151	+0.41	+12.5	+21	+3.2	-6.2	+3.7	+1.4	+0.0	+90
PERC	51	62	26	38	8	12	6	4	19	3	20	17	21	21	95	50	7

	PROFIT				
INDEX	\$A	\$D	\$GN	\$GS	\$T
VALUE	\$213	\$168	\$286	\$198	\$215
PERC	46	57	41	44	15

	DOCILITY		CLAW SHAPE		FOOT ANGLE		STRUCTURE			
OBS	DOC		FRONT	REAR	FRONT	REAR	SIDE	HIND	MUSC	SHTH
RAW	1		6	6	6	6	5	5	C+	4
EBV	+15		+0.86		+0.80		+0.94			
PERC	75		54		15		25			

Genetic Conditions: AMFU,CAFU,DDFU,NHFU

KEY: Percentile Bands - Top

10% 25% 50% CE DIR or BWT

Traits Observed: (all bulls)  
200WT x 2, 400WT x 2, DOC, Genomics

Mid-February 2025  
TransTasman Angus  
Cattle Evaluation



11 U8

STELLAR PROSPECT NEUTRON U8

JCA23U8

01/08/2023

PV

AI

HBR



Soft moderate and docile bull with short gestation and DTC.

♂ RENNYLEA L519

**SIRE: RENNYLEA PROSPECT P550**

♂ RENNYLEA K609

♂ STELLAR NEUTRON N4

**DAM: STELLAR MITAGONG NEUTRON Q28**

♂ STELLAR MITTAGONG PROPHET N3

	CALVING				GROWTH			MATERNAL				FERTILITY		CARCASE			
TRAIT	CE DIR	CE DTR	GL	BWT	200	400	600	MCW	MBC	MCH	MILK	SS	DTC	IMF	EMA	RIB	CWT
EBV	+2.3	+2.0	-7.5	+3.9	+50	+96	+122	+122	+0.42	+8.3	+17	+3.1	-7.1	+3.2	+4.8	+1.7	+69
PERC	55	66	12	49	60	43	46	21	17	52	52	19	10	31	70	17	49

	PROFIT				
INDEX	\$A	\$D	\$GN	\$GS	\$T
VALUE	\$209	\$177	\$272	\$196	\$194
PERC	50	43	53	46	46

	DOCILITY		CLAW SHAPE		FOOT ANGLE		STRUCTURE		
OBS	DOC	FRONT	REAR	FRONT	REAR	SIDE	HIND	MUSC	SHTH
RAW	1	7	6	6	6	6	5	C+	5
EBV	+20	+0.94	+0.76	+0.98					
PERC	55	70	10	36					

Genetic Conditions: AMFU,CAFU,DDFU,NHFU

12 U24

STELLAR QUICKSILVER BLKPEARL U24

JCA23U24

06/08/2023

PV

AI

HBR



Super high growth bull (top 1% 200D) sure to produce some very heavy steers with heaps of IMF.

♂ LAWSONS MOMENTOUS M518

**SIRE: STELLAR QUICKSILVER Q7**

♂ STELLAR VICKY PROPHET N9

♂ SYDGEN BLACK PEARL 2006

**DAM: STELLAR BARUNAH BLACK PEARL L19**

♂ WELCOME SWALLOW INFINITY F228

	CALVING				GROWTH			MATERNAL				FERTILITY		CARCASE			
TRAIT	CE DIR	CE DTR	GL	BWT	200	400	600	MCW	MBC	MCH	MILK	SS	DTC	IMF	EMA	RIB	CWT
EBV	-18.2	-1.7	-3.6	+7.8	+73	+120	+160	+116	+0.20	+9.5	+20	+2.0	-3.9	+4.3	+6.3	-2.8	+88
PERC	99	90	65	99	1	3	2	29	72	29	31	56	72	12	52	95	8

	PROFIT				
INDEX	\$A	\$D	\$GN	\$GS	\$T
VALUE	\$210	\$157	\$304	\$195	\$203
PERC	49	70	26	48	31

	DOCILITY		CLAW SHAPE		FOOT ANGLE		STRUCTURE		
OBS	DOC	FRONT	REAR	FRONT	REAR	SIDE	HIND	MUSC	SHTH
RAW	1	7	6	6	6	5	5	C	4
EBV	+38	+0.72	+0.84	+1.06					
PERC	6	25	21	61					

Genetic Conditions: AMFU,CAFU,DDFU,NHFU

KEY: Percentile Bands - Top

10% 25% 50% CE DIR or BWT

Traits Observed: (all bulls)  
200WT x 2, 400WT x 2, DOC, Genomics

Mid-February 2025  
TransTasman Angus  
Cattle Evaluation



13 U10

STELLAR QUANTUM MILKY WAY U10

JCA23U10

03/08/2023

PV

AI

APR



Soft and docile bull with loads of growth.

♂ BALDRIDGE BEAST MODE B074

**SIRE: CHILTERN PARK QUANTUM Q135**

♂ CHILTERN PARK K44

♂ STELLAR MILKY WAY L8

**DAM: STELLAR MOJITO MILKY WAY Q18**

♂ STELLAR MOJITO G3

	CALVING				GROWTH			MATERNAL				FERTILITY		CARCASE			
TRAIT	CE DIR	CE DTR	GL	BWT	200	400	600	MCW	MBC	MCH	MILK	SS	DTC	IMF	EMA	RIB	CWT
EBV	-9.9	-2.2	-6.5	+6.8	+65	+107	+137	+134	+0.51	+7.5	+9	+2.5	-4.5	+2.6	+7.8	+0.0	+70
PERC	99	91	21	95	7	16	18	11	6	68	95	37	58	44	34	50	48

	PROFIT				
INDEX	\$A	\$D	\$GN	\$GS	\$T
VALUE	\$201	\$162	\$278	\$183	\$201
PERC	60	63	48	61	34

	DOCILITY		CLAW SHAPE		FOOT ANGLE		STRUCTURE			
OBS	DOC		FRONT	REAR	FRONT	REAR	SIDE	HIND	MUSC	SHTH
RAW	1		6	6	6	6	4	5	C+	5
EBV	+31		+0.80		+0.78		+0.74			
PERC	17		41		12		2			

Genetic Conditions: AMFU,CAFU,DDFU,NHFU

14 U126

STELLAR QUINELLA ALL IN U126

JCA23U126

24/07/2023

PV

ET

HBR

Withdrawn

♂ G A R FAIL SAFE

**SIRE: MOOGENILLA QUINELLA Q33**

♂ MOOGENILLA N9

♂ DEER VALLEY ALL IN

**DAM: STELLAR BLACKBIRD ALL IN N18**

♂ STRATHEWEN RNB BLACKBIRD L01

	CALVING				GROWTH			MATERNAL				FERTILITY		CARCASE			
TRAIT	CE DIR	CE DTR	GL	BWT	200	400	600	MCW	MBC	MCH	MILK	SS	DTC	IMF	EMA	RIB	CWT
EBV	+4.2	+10.9	-5.7	+3.3	+60	+115	+131	+108	+0.37	+6.9	+20	+4.5	-5.4	+4.9	+2.8	+1.1	+79
PERC	38	1	32	35	17	6	29	40	27	78	31	3	36	7	88	26	23

	PROFIT				
INDEX	\$A	\$D	\$GN	\$GS	\$T
VALUE	\$244	\$213	\$342	\$230	\$227
PERC	14	8	7	14	6

	DOCILITY		CLAW SHAPE		FOOT ANGLE		STRUCTURE			
OBS	DOC		FRONT	REAR	FRONT	REAR	SIDE	HIND	MUSC	SHTH
RAW	1		6	8	6	8	5	5	C+	4
EBV	+26		+1.10		+1.04		+0.84			
PERC	32		91		68		8			

Genetic Conditions: AMFU,CAFU,DDFU,NHFU

KEY: Percentile Bands - Top

10% 25% 50% CE DIR or BWT

Traits Observed: (all bulls)  
200WT x 2, 400WT x 2, DOC, Genomics

Mid-February 2025  
TransTasman Angus  
Cattle Evaluation



# SALE BULLS SUMMARY

Lot	Tag	Ident	Name	Sire	Dam	Reg	CE Dir	GL	Bwt
1	U110	JCA23U110	STELLAR FIVE1NINE MOMENTOUS U110	NORL519	JCAQ15	HBR	+7.5	-3.8	+3.4
2	U14	JCA23U14	STELLAR QUINELLA MILKY WAY U14	BWFQ33	JCAQ23	APR	+6.3	-2.5	+1.8
3	U7	JCA23U7	STELLAR UNIVERSE U7	BWFQ33	JCA21S1	HBR	+8.8	-6.4	+2.4
4	U111	JCA23U111	STELLAR UNITY U111	VLYR4010	CSWL123	HBR	+4.7	-9.8	+1.8
5	U106	JCA23U106	STELLAR ULYSSES U106	BWFQ33	CSWL123	HBR	-0.1	-6.1	+5.6
6	U23	JCA23U23	STELLAR QUICKSILVER SUMO U23	JCAQ7	JCAR58	HBR	-1.1	-4.1	+4.4
7	U31	JCA23U31	STELLAR FIVE1NINE PROPHET U31	NORL519	JCAR1	HBR	+1.8	-3	+5.6
8	U121	JCA23U121	STELLAR QUARTERBACK ALL IN U121	CSWQ011	JCAN18	HBR	+6.1	-7.5	+1.0
9	U129	JCA23U129	STELLAR ROCKY DRAMBUIE U129	VLYR4010	AHWH130	HBR	+5.8	-2.3	+5.1
10	U125	JCA23U125	STELLAR QUARTERBACK ALL IN U125	CSWQ011	JCAN18	HBR	+2.8	-6.1	+3.4
11	U8	JCA23U8	STELLAR PROSPECT NEUTRON U8	NORP550	JCAQ28	HBR	+2.3	-7.5	+3.9
12	U24	JCA23U24	STELLAR QUICKSILVER BLKPEARL U24	JCAQ7	JCAL19	HBR	-18.2	-3.6	+7.8
13	U10	JCA23U10	STELLAR QUANTUM MILKY WAY U10	GTNQ135	JCAQ18	APR	-9.9	-6.5	+6.8
44	U126	JCA23U126	STELLAR QUINELLA ALL IN U126	BWFQ33	JCAN18	HBR	+4.2	-5.7	+3.3
15	U127	JCA23U127	STELLAR ROCKY EDMUND U127	VLYR4010	CSWL123	HBR	+2.0	-5.8	+3.2
16	U56	JCA23U56	STELLAR QUICKSILVER LOTTO U56	JCAQ7	JCAP2	HBR	+0.7	-4.2	+4.2
17	U34	JCA23U34	STELLAR SILVERADO VISION U34	JCA21S44	JCA21S38	APR	-4.7	-9.6	+5.1
18	U44	JCA23U44	STELLAR SILVERADO ALTERNATVE U44	JCA21S44	JCA21S114	HBR	+4.7	-6.2	+3.6
19	U38	JCA23U38	STELLAR SILVERADO QUARTERBCK U38	JCA21S44	JCA21S7	APR	-0.2	-4.3	+4.2
20	U101	JCA23U101	STELLAR QUANTUM NETHERBY U101	GTNQ135	BHRQ456	HBR	+6.5	-7.8	+1.4
21	U19	JCA23U19	STELLAR QUICKSILVER MILKYWAY U19	JCAQ7	JCAQ30	HBR	+2.5	-6.4	+2.7
22	U52	JCA23U52	STELLAR SILVERADO QUARTERBCK U52	JCA21S44	JCA21S20	APR	+1.0	-3.4	+4.8
23	U27	JCA23U27	STELLAR QUIDITCH 38 SPECIAL U27	BSCQ43	JCAR25	APR	+4.2	-0.1	+3.7
24	U55	JCA23U55	STELLAR SILVERADO MOMENTOUS U55	JCA21S44	JCA21S12	HBR	-12.1	-4.7	+4.6
25	U37	JCA23U37	STELLAR QUICKSILVER COMMANDO U37	JCAQ7	JCAR16	APR	-2.8	-6.3	+4.3
26	U30	JCA23U30	STELLAR FIVE1NINE NEUTRON U30	NORL519	JCAR50	APR	+1.1	-3.6	+3.9
27	U20	JCA23U20	STELLAR QUICKSILVER MILKYWAY U20	JCAQ7	JCAP28	APR	-4	-4.6	+3.4
28	U57	JCA23U57	STELLAR QUICKSILVER MILKYWAY U57	JCAQ7	JCAQ44	HBR	-4.9	-7.8	+5.5
29	U22	JCA23U22	STELLAR QUIDITCH WEST POINT U22	BSCQ43	JCA21S107	HBR	+5.1	-3	+3.5
30	U137	JCA23U137	STELLAR ROCKY LOTTO U137	VLYR4010	JCAP6	APR	-0.4	-3.2	+5.1
31	U28	JCA23U28	STELLAR QUICKSILVER INFINITY U28	JCAQ7	CMAF228	HBR	+3.4	-2.9	+3.2
32	U26	JCA23U26	STELLAR PLANTATION ENVISION U26	NBHP392	JCAR12	HBR	+1.6	-2.2	+3.4
33	U54	JCA23U54	STELLAR SUPERBOWL MILKY WAY U54	JCA21S110	JCA21S50	HBR	+4.2	-5.6	+4.5
34	U115	JCA23U115	STELLAR ROCKY DRAMBUIE U115	VLYR4010	AHWH130	HBR	+7.2	-5.3	+3.2
35	U103	JCA23U103	STELLAR ROCKY PROPHET U103	VLYR4010	JCAN9	HBR	+7.8	-6.4	+2.2

## KEY

Top 10%
  Top 25%
  Top 50% CE DIR or BWT

## BREED AVERAGES

CE Dir	GL	Bwt
+2.3	-4.6	+3.9



200	400	600	MCW	MBC	MCH	SS	IMF	EMA	Rib	Doc	Ang	Claw	Leg	\$A	\$GN
+48	+88	+110	+88	+0.31	+9.0	+0.2	+5.7	+7.5	+2.6	+32	+0.84	+0.84	+0.90	\$243	\$339
+48	+98	+124	+64	-0.15	+6.9	+1.7	+3.4	+7.4	+1.1	+8	+0.96	+1.00	+1.00	\$245	\$334
+54	+102	+135	+85	-0.01	+5.9	+3.8	+5.5	+5.7	+0.0	+16	+0.90	+0.80	+0.88	\$275	\$374
+54	+104	+134	+123	+0.61	+9.4	+1.3	+4.8	+6.5	+1.7	+4	+1.12	+1.10	+1.22	\$252	\$336
+62	+116	+148	+126	+0.29	+8.8	+3.2	+3.4	+10.6	-2.2	+26	+0.90	+0.64	+0.94	\$243	\$322
+65	+108	+139	+120	+0.48	+8.4	+1.3	+4.9	+12.6	-2.9	+18	+0.62	+0.90	+0.94	\$257	\$357
+63	+112	+150	+132	+0.33	+8.7	+2.5	+3.8	+4.9	+1.7	+31	+0.64	+0.72	+1.00	\$257	\$339
+57	+110	+137	+103	+0.21	+11.9	+2.8	+4.9	+6.8	-1.3	+24	+1.14	+0.98	+1.04	\$269	\$364
+60	+108	+139	+146	+0.53	+10.0	+3.3	+2.2	+12.3	-0.5	+7	+0.92	+0.88	+1.00	\$232	\$303
+64	+110	+150	+151	+0.41	+12.5	+3.2	+3.7	+1.4	+0.0	+15	+0.80	+0.86	+0.94	\$213	\$286
+50	+96	+122	+122	+0.42	+8.3	+3.1	+3.2	+4.8	+1.7	+20	+0.76	+0.94	+0.98	\$209	\$272
+73	+120	+160	+116	+0.20	+9.5	+2.0	+4.3	+6.3	-2.8	+38	+0.84	+0.72	+1.06	\$210	\$304
+65	+107	+137	+134	+0.51	+7.5	+2.5	+2.6	+7.8	+0.0	+31	+0.78	+0.80	+0.74	\$201	\$278
+60	+115	+131	+108	+0.37	+6.9	+4.5	+4.9	+2.8	+1.1	+26	+1.04	+1.10	+0.84	\$244	\$342
+44	+85	+104	+64	+0.44	+9.2	+3.2	+3.4	+13.6	+1.1	+21	+0.92	+0.38	+1.10	\$243	\$320
+54	+96	+131	+109	+0.53	+6.4	+0.5	+3.5	+10.4	-1.4	+40	+0.80	+0.94	+1.06	\$223	\$303
+65	+106	+132	+104	+0.27	+7.6	+2.9	+1.6	+9.1	-2.9	+43	+0.64	+0.94	+0.80	\$217	\$288
+59	+101	+135	+115	+0.22	+6.8	-0.5	+2.5	+9.7	-2.4	+17	+0.92	+1.12	+0.80	\$226	\$303
+62	+110	+141	+112	+0.06	+10.9	+2.8	+3.7	+6.6	-3.1	+18	+1.00	+0.86	+1.18	\$239	\$322
+55	+97	+118	+105	+0.35	+8.6	+2.2	+2.0	+3.7	-0.3	+19	+0.72	+0.80	+0.84	\$199	\$265
+49	+87	+122	+100	+0.23	+10.2	+1.1	+4.6	+8.2	-1.4	+35	+0.96	+0.92	+1.00	\$186	\$265
+53	+96	+124	+97	+0.26	+9.4	+3.9	+5.2	+7.3	-1.3	+27	+0.62	+0.66	+1.04	\$248	\$328
+47	+87	+112	+103	+0.40	+6.5	+0.9	+3.3	+8.7	+0.4	+26	+0.84	+0.60	+1.00	\$220	\$288
+57	+98	+127	+97	+0.29	+8.7	+2.1	+5.0	+4.3	-0.8	+34	+0.74	+0.64	+0.82	\$158	\$241
+51	+97	+125	+94	+0.30	+9.4	+2.1	+5.8	+8.1	+0.8	+13	+0.94	+0.80	+1.06	\$259	\$349
+53	+91	+117	+96	+0.18	+7.5	+0.5	+4.1	+5.1	-2.8	+0	+0.80	+0.78	+0.86	\$210	\$285
+50	+90	+120	+87	+0.18	+7.8	+1.7	+4.4	+6.1	+0.0	+11	+0.92	+0.82	+0.88	\$214	\$288
+63	+102	+132	+111	+0.27	+10.2	+3.1	+4.1	+9.8	-2.3	+17	+0.86	+0.82	+1.14	\$203	\$292
+47	+83	+102	+69	+0.15	+7.6	+0.0	+4.1	+2.4	+1.6	+21	+0.66	+0.82	+0.72	\$211	\$293
+50	+94	+126	+106	+0.47	+9.9	+3.5	+5.5	+10.1	+1.0	+27	+1.22	+0.98	+1.16	\$251	\$335
+50	+81	+104	+75	+0.36	+7.6	+1.9	+3.3	+13.5	+0.5	+31	+1.10	+0.98	+1.12	\$240	\$320
+60	+91	+118	+71	+0.28	+4.9	+4.4	+4.5	+5.5	-1.4	+18	+1.12	+0.94	+1.06	\$229	\$322
+64	+103	+134	+123	+0.46	+8.9	+2.7	+2.1	+4.3	+2.2	+7	+1.00	+0.96	+1.06	\$219	\$299
+50	+97	+122	+130	+0.42	+8.8	+3.2	+2.5	+12.2	-1.5	+18	+0.90	+1.08	+1.28	\$207	\$268
+45	+83	+107	+69	+0.23	+9.2	+1.2	+4.0	+8.6	+1.5	+23	+0.86	+0.78	+0.92	\$209	\$295
200	400	600	MCW	MBC	MCH	SS	IMF	EMA	Rib	Doc	Ang	Claw	Leg	\$A	\$GN
+52	+94	+121	+103	+0.29	+8.3	+2.2	+2.5	+6.6	+0.1	+21	+0.96	+0.84	+1.02	+206	+273

15		U127 STELLAR ROCKY EDMUND U127										JCA23U127 24/07/2023			PV	ET	HBR	
♂ GAR MOMENTUM <b>SIRE: LAWSONS ROCKY R4010</b> ♂ LAWSONS JUDD P4005					♂ RENNYLEA EDMUND E11 <b>DAM: MURDEDUKE JEDDA L123</b> ♂ MURDEDUKE H209					Attractive, long and mobile Jedda L123 son. Top 15% indexes with huge EMA. Recommended for multiple bull purchasers - he'll be anxious if singled out.								
		CALVING				GROWTH			MATERNAL				FERTILITY		CARCASE			
TRAIT	CE DIR	CE DTR	GL	BWT	200	400	600	MCW	MBC	MCH	MILK	SS	DTC	IMF	EMA	RIB	CWT	
EBV	+2.0	+4.6	-5.8	+3.2	+44	+85	+104	+64	+0.44	+9.2	+17	+3.2	-5.1	+3.4	+13.6	+1.1	+55	
PERC	58	38	30	33	83	76	83	94	14	33	49	17	43	27	3	26	86	
		PROFIT					DOCILITY		CLAW SHAPE		FOOT ANGLE		STRUCTURE					
INDEX	\$A	\$D	\$GN	\$GS	\$T	OBS	DOC	FRONT	REAR	FRONT	REAR	SIDE	HIND	MUSC	SHTH			
VALUE	\$243	\$203	\$320	\$231	\$200	RAW	2	6	5	6	6	5	5	C+	5			
PERC	15	14	16	13	36	EBV	+21	+0.38	+0.92	+1.10								
Genetic Conditions: AMFU,CAFU,DDFU,NHFU					PERC	49	1	39	73									

16		U56 STELLAR QUICKSILVER LOTTO U56										JCA23U56 08/09/2023			PV	Nat	HBR	
♂ LAWSONS MOMENTOUS M518 <b>SIRE: STELLAR QUICKSILVER Q7</b> ♂ STELLAR VICKY PROPHET N9					♂ ESSLEMONT LOTTO L3 <b>DAM: STELLAR BARUNAH LOTTO P2</b> ♂ STELLAR BARUNAH BLACK PEARL L19					Long and smooth bull with the new Mature Cow Body Condition EBV in the top 5%. Good growth and big EMA.								
		CALVING				GROWTH			MATERNAL				FERTILITY		CARCASE			
TRAIT	CE DIR	CE DTR	GL	BWT	200	400	600	MCW	MBC	MCH	MILK	SS	DTC	IMF	EMA	RIB	CWT	
EBV	+0.7	+4.5	-4.2	+4.2	+54	+96	+131	+109	+0.53	+6.4	+19	+0.5	-3.9	+3.5	+10.4	-1.4	+79	
PERC	68	40	55	57	40	42	29	39	5	85	37	95	72	25	13	80	23	
		PROFIT					DOCILITY		CLAW SHAPE		FOOT ANGLE		STRUCTURE					
INDEX	\$A	\$D	\$GN	\$GS	\$T	OBS	DOC	FRONT	REAR	FRONT	REAR	SIDE	HIND	MUSC	SHTH			
VALUE	\$223	\$171	\$303	\$207	\$207	RAW	2	7	6	7	6	5	5	C+	3			
PERC	34	52	27	34	24	EBV	+40	+0.94	+0.80	+1.06								
Genetic Conditions: AMFU,CAFU,DDFU,NHFU					PERC	4	70	15	61									

17		U34 STELLAR SILVERADO VISION U34										JCA23U34 18/08/2023			PV	Nat	APR	
♂ STELLAR QUICKSILVER Q7 <b>SIRE: STELLAR SILVERADO S44</b> ♂ STELLAR BARUNAH MILKY WAY P22					♂ STELLAR VISION Q14 <b>DAM: STELLAR HEKA VISION S38</b> ♂ STELLAR HEKA LOTTO P8					Thick and big nutted bull with good growth.								
		CALVING				GROWTH			MATERNAL				FERTILITY		CARCASE			
TRAIT	CE DIR	CE DTR	GL	BWT	200	400	600	MCW	MBC	MCH	MILK	SS	DTC	IMF	EMA	RIB	CWT	
EBV	-4.7	-12.7	-9.6	+5.1	+65	+106	+132	+104	+0.27	+7.6	+15	+2.9	-6.2	+1.6	+9.1	-2.9	+73	
PERC	92	99	3	76	7	18	26	47	53	66	70	24	21	69	22	96	38	
		PROFIT					DOCILITY		CLAW SHAPE		FOOT ANGLE		STRUCTURE					
INDEX	\$A	\$D	\$GN	\$GS	\$T	OBS	DOC	FRONT	REAR	FRONT	REAR	SIDE	HIND	MUSC	SHTH			
VALUE	\$217	\$185	\$288	\$198	\$196	RAW	2	7	6	6	6	5	5	C+	5			
PERC	40	33	39	45	43	EBV	+43	+0.94	+0.64	+0.80								
Genetic Conditions: AMFU,CAFU,DDFU,NHFU					PERC	2	70	2	5									

KEY: Percentile Bands - Top

10% 25% 50% CE DIR or BWT

Traits Observed: (all bulls)  
 200WT x 2, 400WT x 2, DOC, Genomics

Mid-February 2025  
 TransTasman Angus  
 Cattle Evaluation



**18 U44 STELLAR SILVERADO ALTERNATIVE U44 JCA23U44 24/08/2023 PV Nat HBR**

♂ STELLAR QUICKSILVER Q7  
**SIRE: STELLAR SILVERADO S44**  
 ♀ STELLAR BARUNAH MILKY WAY P22

♂ BALDRIDGE ALTERNATIVE E125  
**DAM: STELLAR MITTAGONG ALTERNATIV S114**  
 ♀ STELLAR MITTAGONG PROPHET N20

Moderate and docile with good growth and EMA.

	CALVING				GROWTH			MATERNAL				FERTILITY		CARCASE			
TRAIT	CE DIR	CE DTR	GL	BWT	200	400	600	MCW	MBC	MCH	MILK	SS	DTC	IMF	EMA	RIB	CWT
EBV	+4.7	-9.7	-6.2	+3.6	+59	+101	+135	+115	+0.22	+6.8	+21	-0.5	-5.2	+2.5	+9.7	-2.4	+64
PERC	33	99	25	42	18	27	22	30	67	79	22	99	41	47	17	92	65

	PROFIT					DOCILITY		CLAW SHAPE		FOOT ANGLE		STRUCTURE			
INDEX	\$A	\$D	\$GN	\$GS	\$T	OBS	DOC	FRONT	REAR	FRONT	REAR	SIDE	HIND	MUSC	SHTH
VALUE	\$226	\$179	\$303	\$205	\$211	RAW	1	7	6	7	6	5	5	C	4
PERC	31	41	27	37	19	EBV	+17	+1.12	+0.92	+0.80					
						PERC	65	92	39	5					

Genetic Conditions: AMFU,CAFU,DDFU,NHFU

**19 U38 STELLAR SILVERADO QUARTERBCK U38 JCA23U38 21/08/2023 PV Nat APR**

♂ STELLAR QUICKSILVER Q7  
**SIRE: STELLAR SILVERADO S44**  
 ♀ STELLAR BARUNAH MILKY WAY P22

♂ MURDEDUKE QUARTERBACK Q011  
**DAM: STELLAR SALLY QUARTERBACK S7**  
 ♀ STELLAR SALLY NEUTRON Q31

Docile, sound and moderate with good growth and IMF. Top 20% indexes.

	CALVING				GROWTH			MATERNAL				FERTILITY		CARCASE			
TRAIT	CE DIR	CE DTR	GL	BWT	200	400	600	MCW	MBC	MCH	MILK	SS	DTC	IMF	EMA	RIB	CWT
EBV	-0.2	-3.3	-4.3	+4.2	+62	+110	+141	+112	+0.06	+10.9	+26	+2.8	-5.6	+3.7	+6.6	-3.1	+94
PERC	74	94	54	57	11	11	13	35	94	11	5	27	32	21	48	97	4

	PROFIT					DOCILITY		CLAW SHAPE		FOOT ANGLE		STRUCTURE			
INDEX	\$A	\$D	\$GN	\$GS	\$T	OBS	DOC	FRONT	REAR	FRONT	REAR	SIDE	HIND	MUSC	SHTH
VALUE	\$239	\$196	\$322	\$223	\$218	RAW	1	6	6	6	6	5	5	C	4
PERC	18	21	15	20	12	EBV	+18	+0.86	+1.00	+1.18					
						PERC	61	54	59	89					

Genetic Conditions: AMFU,CAFU,DDFU,NHFU

**20 U101 STELLAR QUANTUM NETHERBY U101 JCA23U101 30/07/2023 PV ET HBR**

♂ BALDRIDGE BEAST MODE B074  
**SIRE: CHILTERN PARK QUANTUM Q135**  
 ♀ CHILTERN PARK K44

♂ DUNOON NETHERBY N098  
**DAM: DUNOON PRINCESS Q456**  
 ♀ DUNOON PRINCESS K046

Smooth shouldered heifer bull with good growth and structure.

	CALVING				GROWTH			MATERNAL				FERTILITY		CARCASE			
TRAIT	CE DIR	CE DTR	GL	BWT	200	400	600	MCW	MBC	MCH	MILK	SS	DTC	IMF	EMA	RIB	CWT
EBV	+6.5	+2.5	-7.8	+1.4	+55	+97	+118	+105	+0.35	+8.6	+20	+2.2	-4.7	+2.0	+3.7	-0.3	+75
PERC	18	61	10	8	35	39	57	46	31	47	30	48	53	59	81	57	34

	PROFIT					DOCILITY		CLAW SHAPE		FOOT ANGLE		STRUCTURE			
INDEX	\$A	\$D	\$GN	\$GS	\$T	OBS	DOC	FRONT	REAR	FRONT	REAR	SIDE	HIND	MUSC	SHTH
VALUE	\$199	\$172	\$265	\$176	\$191	RAW	1	6	6	6	6	5	5	C	4
PERC	62	51	60	68	50	EBV	+19	+0.80	+0.72	+0.84					
						PERC	58	41	6	8					

Genetic Conditions: AMFU,CAFU,DDFU,NHFU

KEY: Percentile Bands - Top

10% 25% 50% CE DIR or BWT

Traits Observed: (all bulls)  
200WT x 2, 400WT x 2, DOC, Genomics

Mid-February 2025  
TransTasman Angus  
Cattle Evaluation



21		U19		STELLAR QUICKSILVER MILKYWAY U19								JCA23U19		04/08/2023		PV		Nat		HBR	
♂ LAWSONS MOMENTOUS M518 <b>SIRE: STELLAR QUICKSILVER Q7</b> ♀ STELLAR VICKY PROPHET N9				♂ STELLAR MILKY WAY L8 <b>DAM: STELLAR BARUNAH MILKY WAY Q30</b> ♀ WELCOME SWALLOW INFINITY F228				High IMF heifer bull with good EMA.													
CALVING		GROWTH			MATERNAL				FERTILITY		CARCASE										
TRAIT	CE DIR	CE DTR	GL	BWT	200	400	600	MCW	MBC	MCH	MILK	SS	DTC	IMF	EMA	RIB	CWT				
EBV	+2.5	+0.1	-6.4	+2.7	+49	+87	+122	+100	+0.23	+10.2	+18	+1.1	-2.7	+4.6	+8.2	-1.4	+58				
PERC	54	81	22	24	64	69	48	55	65	18	45	85	90	9	30	80	80				
PROFIT					DOCILITY		CLAW SHAPE		FOOT ANGLE		STRUCTURE										
INDEX	\$A	\$D	\$GN	\$GS	\$T	OBS	DOC	FRONT	REAR	FRONT	REAR	SIDE	HIND	MUSC	SHTH						
VALUE	\$186	\$131	\$265	\$170	\$194	RAW	2	7	7	7	7	4	5	C	4						
PERC	75	91	60	73	45	EBV	+35	+0.92	+0.96	+1.00											
Genetic Conditions: AMFU,CAFU,DDFU,NHFU					PERC	9	66	49	42												

22		U52		STELLAR SILVERADO QUARTERBCK U52								JCA23U52		27/08/2023		PV		Nat		APR	
♂ STELLAR QUICKSILVER Q7 <b>SIRE: STELLAR SILVERADO S44</b> ♀ STELLAR BARUNAH MILKY WAY P22				♂ MURDEDUKE QUARTERBACK Q011 <b>DAM: STELLAR SAN FRAN QUARTERBACK S20</b> ♀ STELLAR SAN FRAN ENVISION Q13				Excellent feet on this moderate bull with elite IMF and huge scrotal EBV. Indexes top 12%.													
CALVING		GROWTH			MATERNAL				FERTILITY		CARCASE										
TRAIT	CE DIR	CE DTR	GL	BWT	200	400	600	MCW	MBC	MCH	MILK	SS	DTC	IMF	EMA	RIB	CWT				
EBV	+1.0	+4.7	-3.4	+4.8	+53	+96	+124	+97	+0.26	+9.4	+20	+3.9	-6.9	+5.2	+7.3	-1.3	+68				
PERC	66	37	68	70	45	44	43	59	56	30	29	7	12	5	40	78	53				
PROFIT					DOCILITY		CLAW SHAPE		FOOT ANGLE		STRUCTURE										
INDEX	\$A	\$D	\$GN	\$GS	\$T	OBS	DOC	FRONT	REAR	FRONT	REAR	SIDE	HIND	MUSC	SHTH						
VALUE	\$248	\$203	\$328	\$239	\$210	RAW	1	5	5	6	6	5	5	C+	4						
PERC	12	14	12	9	21	EBV	+27	+0.66	+0.62	+1.04											
Genetic Conditions: AMFU,CAFU,DDFU,NHFU					PERC	27	16	2	55												

23		U27		STELLAR QUIDITCH 38 SPECIAL U27								JCA23U27		08/08/2023		PV		AI		APR	
♂ GAR PHOENIX <b>SIRE: WAITARA QUIDDITCH Q43</b> ♀ WAITARA GT RITA K68				♂ BALDRIDGE 38 SPECIAL <b>DAM: STELLAR SWALLOW 38 SPECIAL R25</b> ♀ STELLAR SWALLOW LOTTO P6				Thick, soft and docile Quidditch son with very good carcase traits and good calving ease.													
CALVING		GROWTH			MATERNAL				FERTILITY		CARCASE										
TRAIT	CE DIR	CE DTR	GL	BWT	200	400	600	MCW	MBC	MCH	MILK	SS	DTC	IMF	EMA	RIB	CWT				
EBV	+4.2	+1.5	-0.1	+3.7	+47	+87	+112	+103	+0.40	+6.5	+12	+0.9	-5.5	+3.3	+8.7	+0.4	+63				
PERC	38	71	97	45	73	69	70	49	21	84	85	89	34	29	25	41	69				
PROFIT					DOCILITY		CLAW SHAPE		FOOT ANGLE		STRUCTURE										
INDEX	\$A	\$D	\$GN	\$GS	\$T	OBS	DOC	FRONT	REAR	FRONT	REAR	SIDE	HIND	MUSC	SHTH						
VALUE	\$220	\$181	\$288	\$204	\$196	RAW	1	6	6	6	6	5	5	C+	4						
PERC	37	38	40	37	43	EBV	+26	+0.60	+0.84	+1.00											
Genetic Conditions: AMFU,CAFU,DDFU,NHFU					PERC	29	9	21	42												

KEY: Percentile Bands - Top

10% 25% 50% CE DIR or BWT

Traits Observed: (all bulls)  
200WT x 2, 400WT x 2, DOC, Genomics

Mid-February 2025  
TransTasman Angus  
Cattle Evaluation



24		U55		STELLAR SILVERADO MOMENTOUS U55								JCA23U55		07/09/2023		PV		Nat		HBR	
♂ STELLAR QUICKSILVER Q7 <b>SIRE: STELLAR SILVERADO S44</b> ♀ STELLAR BARUNAH MILKY WAY P22					♂ LAWSONS MOMENTOUS M518 <b>DAM: STELLAR WILPENA MOMENTOUS S12</b> ♀ STELLAR WILPENA ENVISION Q6					Moderate and thick with elite IMF.											
CALVING					GROWTH			MATERNAL				FERTILITY		CARCASE							
TRAIT	CE DIR	CE DTR	GL	BWT	200	400	600	MCW	MBC	MCH	MILK	SS	DTC	IMF	EMA	RIB	CWT				
EBV	-12.1	-10.5	-4.7	+4.6	+57	+98	+127	+97	+0.29	+8.7	+22	+2.1	-3.3	+5.0	+4.3	-0.8	+67				
PERC	99	99	47	66	27	35	36	59	48	44	18	52	83	6	76	69	57				
PROFIT					DOCILITY				CLAW SHAPE		FOOT ANGLE		STRUCTURE								
INDEX	\$A	\$D	\$GN	\$GS	\$T	OBS	DOC	FRONT	REAR	FRONT	REAR	SIDE	HIND	MUSC	SHTH						
VALUE	\$158	\$113	\$241	\$140	\$176	RAW	1	6	6	6	6	5	5	C+	4						
PERC	91	96	76	91	73	EBV	+34	+0.64	+0.74	+0.82											
Genetic Conditions: AMFU,CAFU,DDFU,NHFU					PERC	10	14	8	6												

25		U37		STELLAR QUICKSILVER COMMANDO U37								JCA23U37		20/08/2023		PV		Nat		APR	
♂ LAWSONS MOMENTOUS M518 <b>SIRE: STELLAR QUICKSILVER Q7</b> ♀ STELLAR VICKY PROPHET N9					♂ EF COMMANDO 1366 <b>DAM: STELLAR SAN FRAN COMMANDO R16</b> ♀ STELLAR SAN FRAN G20					Free-moving and sound with elite IMF. Top shelf indexes.											
CALVING					GROWTH			MATERNAL				FERTILITY		CARCASE							
TRAIT	CE DIR	CE DTR	GL	BWT	200	400	600	MCW	MBC	MCH	MILK	SS	DTC	IMF	EMA	RIB	CWT				
EBV	-2.8	+5.0	-6.3	+4.3	+51	+97	+125	+94	+0.30	+9.4	+18	+2.1	-7.3	+5.8	+8.1	+0.8	+66				
PERC	87	34	24	59	54	39	41	64	45	30	46	52	8	2	31	32	59				
PROFIT					DOCILITY				CLAW SHAPE		FOOT ANGLE		STRUCTURE								
INDEX	\$A	\$D	\$GN	\$GS	\$T	OBS	DOC	FRONT	REAR	FRONT	REAR	SIDE	HIND	MUSC	SHTH						
VALUE	\$259	\$209	\$349	\$251	\$214	RAW	2	6	6	6	6	5	6	C+	4						
PERC	6	10	5	5	16	EBV	+13	+0.80	+0.94	+1.06											
Genetic Conditions: AMFU,CAFU,DDFU,NHFU					PERC	81	41	44	61												

26		U30		STELLAR FIVE1NINE NEUTRON U30								JCA23U30		09/08/2023		PV		AI		APR	
♂ H P C A INTENSITY <b>SIRE: RENNYLEA L519</b> ♀ RENNYLEA H414					♂ STELLAR NEUTRON N4 <b>DAM: STELLAR MOJITO NEUTRON R50</b> ♀ STELLAR MOJITO MILKY WAY P26					Heifer bull with excellent IMF.											
CALVING					GROWTH			MATERNAL				FERTILITY		CARCASE							
TRAIT	CE DIR	CE DTR	GL	BWT	200	400	600	MCW	MBC	MCH	MILK	SS	DTC	IMF	EMA	RIB	CWT				
EBV	+1.1	+4.1	-3.6	+3.9	+53	+91	+117	+96	+0.18	+7.5	+17	+0.5	-3.9	+4.1	+5.1	-2.8	+74				
PERC	65	44	65	49	44	57	59	60	77	67	52	95	72	15	67	95	35				
PROFIT					DOCILITY				CLAW SHAPE		FOOT ANGLE		STRUCTURE								
INDEX	\$A	\$D	\$GN	\$GS	\$T	OBS	DOC	FRONT	REAR	FRONT	REAR	SIDE	HIND	MUSC	SHTH						
VALUE	\$210	\$169	\$285	\$190	\$192	RAW	3	6	7	6	7	5	5	C+	4						
PERC	49	54	42	53	49	EBV	+0	+0.78	+0.80	+0.86											
Genetic Conditions: AMFU,CAFU,DDFU,NHFU					PERC	99	37	15	10												

**KEY:** Percentile Bands - Top  
 10% 25% 50% CE DIR or BWT

**Traits Observed:** (all bulls)  
 200WT x 2, 400WT x 2, DOC, Genomics

Mid-February 2025  
 TransTasman Angus  
 Cattle Evaluation



**27 U20 STELLAR QUICKSILVER MILKYWAY U20 JCA23U20 05/08/2023 PV AI APR**

┌ LAWSONS MOMENTOUS M518  
**SIRE: STELLAR QUICKSILVER Q7**  
└ STELLAR VICKY PROPHET N9

┌ STELLAR MILKY WAY L8  
**DAM: STELLAR FRANCESCA MILKY WAY P28**  
└ STELLAR FRANCESCA DBL VISION M13

Slick, soft and docile with excellent IMF.

	CALVING				GROWTH			MATERNAL				FERTILITY		CARCASE			
TRAIT	CE DIR	CE DTR	GL	BWT	200	400	600	MCW	MBC	MCH	MILK	SS	DTC	IMF	EMA	RIB	CWT
EBV	-4	-4.5	-4.6	+3.4	+50	+90	+120	+87	+0.18	+7.8	+20	+1.7	-6.2	+4.4	+6.1	+0.0	+62
PERC	91	96	49	38	58	61	53	75	77	61	26	67	21	11	54	50	70

	PROFIT					DOCILITY		CLAW SHAPE		FOOT ANGLE		STRUCTURE			
INDEX	\$A	\$D	\$GN	\$GS	\$T	OBS	DOC	FRONT	REAR	FRONT	REAR	SIDE	HIND	MUSC	SHTH
VALUE	\$214	\$167	\$288	\$200	\$187	RAW	1	7	7	6	6	5	5	C	5
PERC	45	58	39	42	57	EBV	+11	+0.82	+0.92	+0.88					
PERC						PERC	86	45	39	13					

Genetic Conditions: AMFU,CAFU,DDFU,NHFU

**28 U57 STELLAR QUICKSILVER MILKYWAY U57 JCA23U57 12/09/2023 PV Nat HBR**

┌ LAWSONS MOMENTOUS M518  
**SIRE: STELLAR QUICKSILVER Q7**  
└ STELLAR VICKY PROPHET N9

┌ STELLAR MILKY WAY L8  
**DAM: STELLAR MITTAGONG MILKY WAY Q44**  
└ STELLAR MITTAGONG K28

Mobile and sound with excellent growth, IMF, EMA and scrotal.

	CALVING				GROWTH			MATERNAL				FERTILITY		CARCASE			
TRAIT	CE DIR	CE DTR	GL	BWT	200	400	600	MCW	MBC	MCH	MILK	SS	DTC	IMF	EMA	RIB	CWT
EBV	-4.9	-3.8	-7.8	+5.5	+63	+102	+132	+111	+0.27	+10.2	+20	+3.1	-3.2	+4.1	+9.8	-2.3	+67
PERC	93	95	10	82	9	25	26	37	53	18	31	19	84	15	16	92	55

	PROFIT					DOCILITY		CLAW SHAPE		FOOT ANGLE		STRUCTURE			
INDEX	\$A	\$D	\$GN	\$GS	\$T	OBS	DOC	FRONT	REAR	FRONT	REAR	SIDE	HIND	MUSC	SHTH
VALUE	\$203	\$156	\$292	\$186	\$208	RAW	3	6	6	6	6	5	5	C	4
PERC	57	71	36	58	24	EBV	+17	+0.82	+0.86	+1.14					
PERC						PERC	68	45	25	82					

Genetic Conditions: AMFU,CAFU,DDFU,NHFU

**29 U22 STELLAR QUIDITCH WEST POINT U22 JCA23U22 05/08/2023 PV AI HBR**

┌ G A R PHOENIX  
**SIRE: WAITARA QUIDDITCH Q43**  
└ WAITARA GT RITA K68

┌ E W A WEST POINT 7258  
**DAM: STELLAR MITTAGONG WEST POINT S107**  
└ STELLAR MITTAGONG PROPHET N20

Moderate and docile with calving ease and IMF.

	CALVING				GROWTH			MATERNAL				FERTILITY		CARCASE			
TRAIT	CE DIR	CE DTR	GL	BWT	200	400	600	MCW	MBC	MCH	MILK	SS	DTC	IMF	EMA	RIB	CWT
EBV	+5.1	+3.6	-3	+3.5	+47	+83	+102	+69	+0.15	+7.6	+11	+0.0	-3.5	+4.1	+2.4	+1.6	+69
PERC	29	50	74	40	72	80	85	92	83	66	91	98	79	15	90	18	50

	PROFIT					DOCILITY		CLAW SHAPE		FOOT ANGLE		STRUCTURE			
INDEX	\$A	\$D	\$GN	\$GS	\$T	OBS	DOC	FRONT	REAR	FRONT	REAR	SIDE	HIND	MUSC	SHTH
VALUE	\$211	\$168	\$293	\$190	\$186	RAW	1	6	6	6	6	4	5	C	4
PERC	48	56	35	53	58	EBV	+21	+0.82	+0.66	+0.72					
PERC						PERC	49	45	3	2					

Genetic Conditions: AMFU,CAFU,DDFU,NHFU

KEY: Percentile Bands - Top

10% 25% 50% CE DIR or BWT

Traits Observed: (all bulls)  
200WT x 2, 400WT x 2, DOC, Genomics

Mid-February 2025  
TransTasman Angus  
Cattle Evaluation



**30 U137 STELLAR ROCKY LOTTO U137 JCA23U137 29/07/2023 PV ET APR**

♂ GAR MOMENTUM  
**SIRE: LAWSONS ROCKY R4010**  
 ♀ LAWSONS JUDD P4005

♂ ESSELMONT LOTTO L3  
**DAM: STELLAR SWALLOW LOTTO P6**  
 ♀ WELCOME SWALLOW IDENTITY C136 J1

Mobile and slick with huge IMF, EMA. Top 10% indexes. High achiever in the Maternal and Fertility EBV sets.

	CALVING				GROWTH			MATERNAL				FERTILITY		CARCASE			
TRAIT	CE DIR	CE DTR	GL	BWT	200	400	600	MCW	MBC	MCH	MILK	SS	DTC	IMF	EMA	RIB	CWT
EBV	-0.4	+6.9	-3.2	+5.1	+50	+94	+126	+106	+0.47	+9.9	+15	+3.5	-7.1	+5.5	+10.1	+1.0	+75
PERC	76	16	71	76	58	49	39	45	10	22	65	12	10	3	15	28	32

	PROFIT					DOCILITY		CLAW SHAPE		FOOT ANGLE		STRUCTURE			
INDEX	\$A	\$D	\$GN	\$GS	\$T	OBS	DOC	FRONT	REAR	FRONT	REAR	SIDE	HIND	MUSC	SHTH
VALUE	\$251	\$198	\$335	\$246	\$216	RAW	2	6	7	7	7	5	5	C	4
PERC	10	18	9	6	14	EBV	+27	+0.98	+1.22	+1.16					
PERC						PERC	26	76	94	86					

Genetic Conditions: AMFU,CAFU,DDFU,NHFU

**31 U28 STELLAR QUICKSILVER INFINITY U28 JCA23U28 09/08/2023 PV Nat HBR**

♂ LAWSONS MOMENTOUS M518  
**SIRE: STELLAR QUICKSILVER Q7**  
 ♀ STELLAR VICKY PROPHET N9

♂ TE MANIA INFINITY 04 379 AB  
**DAM: WELCOME SWALLOW INFINITY F228**  
 ♀ WELCOME SWALLOW DAY AHEAD CMAD43

Smooth coated heifer bull with huge EMA and good IMF. Top 18% indexes.

	CALVING				GROWTH			MATERNAL				FERTILITY		CARCASE			
TRAIT	CE DIR	CE DTR	GL	BWT	200	400	600	MCW	MBC	MCH	MILK	SS	DTC	IMF	EMA	RIB	CWT
EBV	+3.4	+2.2	-2.9	+3.2	+50	+81	+104	+75	+0.36	+7.6	+13	+1.9	-5	+3.3	+13.5	+0.5	+47
PERC	45	64	75	33	57	84	84	88	29	66	81	60	46	29	3	38	95

	PROFIT					DOCILITY		CLAW SHAPE		FOOT ANGLE		STRUCTURE			
INDEX	\$A	\$D	\$GN	\$GS	\$T	OBS	DOC	FRONT	REAR	FRONT	REAR	SIDE	HIND	MUSC	SHTH
VALUE	\$240	\$193	\$320	\$223	\$201	RAW	1	6	7	6	7	5	6	C	4
PERC	18	24	17	19	35	EBV	+31	+0.98	+1.10	+1.12					
PERC						PERC	17	76	80	78					

Genetic Conditions: AMFU,CAFU,DDFU,NHFU

**32 U26 STELLAR PLANTATION ENVISION U26 JCA23U26 07/08/2023 PV AI HBR**

♂ BALDRIDGE BEAST MODE B074  
**SIRE: CLUNIE RANGE PLANTATION P392**  
 ♀ CLUNIE RANGE NAOMI M516

♂ 44 ENVISION  
**DAM: STELLAR BARUNAH ENVISION R12**  
 ♀ STELLAR BARUNAH BLACK PEARL L19

Heifer bull with huge scrotal and top 10% IMF.

	CALVING				GROWTH			MATERNAL				FERTILITY		CARCASE			
TRAIT	CE DIR	CE DTR	GL	BWT	200	400	600	MCW	MBC	MCH	MILK	SS	DTC	IMF	EMA	RIB	CWT
EBV	+1.6	+0.6	-2.2	+3.4	+60	+91	+118	+71	+0.28	+4.9	+22	+4.4	-3.9	+4.5	+5.5	-1.4	+64
PERC	61	78	83	38	17	57	56	91	50	96	18	4	72	10	62	80	65

	PROFIT					DOCILITY		CLAW SHAPE		FOOT ANGLE		STRUCTURE			
INDEX	\$A	\$D	\$GN	\$GS	\$T	OBS	DOC	FRONT	REAR	FRONT	REAR	SIDE	HIND	MUSC	SHTH
VALUE	\$229	\$176	\$322	\$212	\$205	RAW	2	6	6	5	6	5	5	C	4
PERC	28	45	15	29	28	EBV	+18	+0.94	+1.12	+1.06					
PERC						PERC	63	70	83	61					

Genetic Conditions: AMFU,CAFU,DDFU,NHFU

KEY: Percentile Bands - Top

10% 25% 50% CE DIR or BWT

Traits Observed: (all bulls)  
 200WT x 2, 400WT x 2, DOC, Genomics

Mid-February 2025  
 TransTasman Angus  
 Cattle Evaluation



33	U54	STELLAR SUPERBOWL MILKY WAY U54										JCA23U54	06/09/2023	PV	Nat	HBR	
♂ MURDEDUKE QUARTERBACK Q011 <b>SIRE: STELLAR SUPERBOWL S110</b> ♀ STELLAR VICKY PROPHET N9					♂ STELLAR MILKY WAY L8 <b>DAM: STELLAR BARA MILKY WAY S50</b> ♀ STELLAR BARA J33					Heifer bull with excellent growth, maternal and fertility traits.							
CALVING					GROWTH			MATERNAL				FERTILITY		CARCASE			
TRAIT	CE DIR	CE DTR	GL	BWT	200	400	600	MCW	MBC	MCH	MILK	SS	DTC	IMF	EMA	RIB	CWT
EBV	+4.2	-1.6	-5.6	+4.5	+64	+103	+134	+123	+0.46	+8.9	+19	+2.7	-5.5	+2.1	+4.3	+2.2	+81
PERC	38	89	33	63	8	24	22	21	11	39	34	30	34	57	76	11	19
PROFIT					DOCILITY				CLAW SHAPE		FOOT ANGLE		STRUCTURE				
INDEX	\$A	\$D	\$GN	\$GS	\$T	OBS	DOC	FRONT	REAR	FRONT	REAR	SIDE	HIND	MUSC	SHTH		
VALUE	\$219	\$176	\$299	\$199	\$208	RAW	1	6	6	6	7	5	5	C	4		
PERC	39	46	30	43	23	EBV	+7	+0.96	+1.00	+1.06							
Genetic Conditions: AMFU,CAFU,DDFU,NHFU					PERC	94	73	59	61								

34	U115	STELLAR ROCKY DRAMBUIE U115										JCA23U115	22/07/2023	PV	ET	HBR	
♂ G A R MOMENTUM <b>SIRE: LAWSONS ROCKY R4010</b> ♀ LAWSONS JUDD P4005					♂ VERMONT DRAMBUIE D057 <b>DAM: ABERDEEN ESTATE MITTAGONG H130</b> ♀ KO MITTAGONG C183					Quiet and sound heifer bull with excellent maternal traits and huge EMA.							
CALVING					GROWTH			MATERNAL				FERTILITY		CARCASE			
TRAIT	CE DIR	CE DTR	GL	BWT	200	400	600	MCW	MBC	MCH	MILK	SS	DTC	IMF	EMA	RIB	CWT
EBV	+7.2	+4.9	-5.3	+3.2	+50	+97	+122	+130	+0.42	+8.8	+15	+3.2	-4.1	+2.5	+12.2	-1.5	+54
PERC	13	35	38	33	61	40	46	14	17	41	65	17	67	47	6	82	88
PROFIT					DOCILITY				CLAW SHAPE		FOOT ANGLE		STRUCTURE				
INDEX	\$A	\$D	\$GN	\$GS	\$T	OBS	DOC	FRONT	REAR	FRONT	REAR	SIDE	HIND	MUSC	SHTH		
VALUE	\$207	\$178	\$268	\$192	\$210	RAW	1	6	5	6	6	5	5	C	4		
PERC	52	42	57	51	21	EBV	+18	+1.08	+0.90	+1.28							
Genetic Conditions: AMFU,CAFU,DDFU,NHFU					PERC	65	89	34	98								

35	U103	STELLAR ROCKY PROPHET U103										JCA23U103	02/08/2023	PV	ET	HBR	
♂ G A R MOMENTUM <b>SIRE: LAWSONS ROCKY R4010</b> ♀ LAWSONS JUDD P4005					♂ G A R PROPHET <b>DAM: STELLAR VICKY PROPHET N9</b> ♀ ABERDEEN ESTATE VICKY G93					Heifer bull with excellent carcass traits.							
CALVING					GROWTH			MATERNAL				FERTILITY		CARCASE			
TRAIT	CE DIR	CE DTR	GL	BWT	200	400	600	MCW	MBC	MCH	MILK	SS	DTC	IMF	EMA	RIB	CWT
EBV	+7.8	+9.0	-6.4	+2.2	+45	+83	+107	+69	+0.23	+9.2	+26	+1.2	-3.4	+4.0	+8.6	+1.5	+46
PERC	10	4	22	16	79	80	78	92	65	35	5	83	81	16	26	20	95
PROFIT					DOCILITY				CLAW SHAPE		FOOT ANGLE		STRUCTURE				
INDEX	\$A	\$D	\$GN	\$GS	\$T	OBS	DOC	FRONT	REAR	FRONT	REAR	SIDE	HIND	MUSC	SHTH		
VALUE	\$209	\$159	\$295	\$192	\$193	RAW	1	6	6	6	6	5	6	C-	4		
PERC	50	67	34	51	47	EBV	+23	+0.78	+0.86	+0.92							
Genetic Conditions: AMFU,CAFU,DDFU,NHFU					PERC	40	37	25	20								

**KEY:** Percentile Bands - Top  
 10% 25% 50% CE DIR or BWT

**Traits Observed:** (all bulls)  
 200WT x 2, 400WT x 2, DOC, Genomics

Mid-February 2025  
 TransTasman Angus  
 Cattle Evaluation





# STRUCTURAL SOUNDNESS

Characteristics such as leg and foot structure are moderately to highly heritable. Angus breeders have two metrics available to assess the structural soundness of registered Angus animals.

1. Beef Class Structural Assessment System
2. Structural EBVs

## BEEF CLASS STRUCTURAL ASSESSMENT SYSTEM (BCSAS)

BCSAS is a subjective tool (a human assessment) rather than an objective measurement.

BCSAS scores are phenotypes which means they are combination of genetics and environment. They are useful for evaluating the soundness (functionality) of the animal in the short term.

Foot and leg structure scores uses a 1-9 scoring system.

- A score of 5 is ideal
- A score of 4 or 6 shows slight variation from ideal, but this includes most sound animals
- A score of 3 or 7 shows greater variation but would be acceptable in most commercial programs
- A score of 2 or 8 are low scoring animals and should be looked at cautiously and inspected very closely before purchasing
- A score of 1 or 9 should be considered an immediate cull.

Sheath and docility scores use a range from 1 to 5. The sheath score is an assessment of the degree of attachment of the penis to the underline of the bull. 5 is tight and 1 is loose. The docility score is an assessment of the animals temperament. 1 is very docile and 5 is aggressive.

It is typical for sale animals to be scored by a trained, accredited and independent assessor. Stellar Livestock uses Liam Cardile to independently assess all sale bulls. These BCSAS scores are also submitted to Angus Australia for inclusion in the TACE genetic evaluation.

## STRUCTURAL EBVS

Like all EBVs, Structural Soundness EBVs estimate only the genetic element of the trait. An animal's EBV is a combination of the animal's own raw performance data and that of all the animals it is genetically related to.

Because EBVs remove the environment factors that influence traits, they are excellent at estimating the genetic impact of a particular animal on its progeny.

## STELLAR LIVESTOCK AND STRUCTURAL SOUNDNESS

Structural Soundness is front-of-mind in every mating we plan. We use structural EBVs to produce estimated progeny predictions that are in the top 50% of the breed.

BCSAS evaluations are used to predict a bulls ability to function through the joining period.

While scores of 5 or 6 are preferred, we also offer bulls with a score of 7. All bulls are guaranteed capable of service regardless of BCSAS score.

In our catalogues both the BCSAS score (raw) and EBV are published together.

	DOCILITY	CLAW SHAPE		FOOT ANGLE			STRUCTURE		
DOB	DOC	FRONT	REAR	FRONT	REAR	SIDE	HIND	MUSC	SMTH
RAW	1	5	5	5	5	5	5	0+	4
EBV	+17	+0.70		+0.93		+0.52			
PERC	67	21		31		17			

Fig 1. Example of catalogue structural information.

In this example, the bull has BCSAS scores ranging from 5 to 6 and EBVs in percentile bands ranging from top 17% to top 31%.

Lower structural EBV values indicate a lower structural score is likely for progeny. There are virtually no animals in the population who score lower than a 5 for Claw and Foot Angle, therefore low scores are desirable. However, low scores for Leg Angle (SIDE) are potentially undesirable as they indicate straight-legged animals. We recommend avoiding extremes at either end when it comes to Leg Angle.

# BCSAS GUIDE

## CLAW SHAPE

Assessing the level of separation between the claws and the degree of curl on the inside edge of the claws.



## FOOT ANGLE

Assessing the depth of heel and level of slope on the hoof.



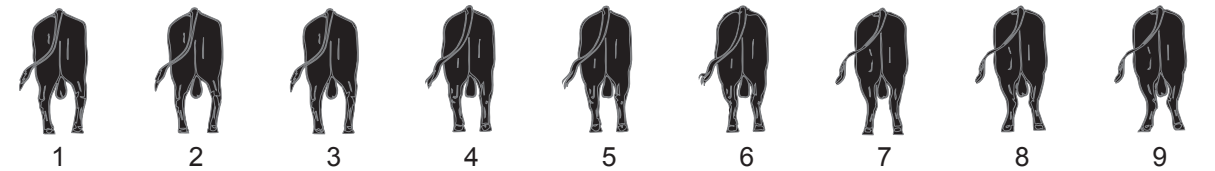
## REAR LEG SIDE VIEW

Assessing the angle of the metatarsus bone relative to a vertical line between the pin bone and the ground.



## REAR LEG HIND VIEW

Assessing the angle between the metatarsus and the tibia visible from behind.



## VIDEOS

Lot videos are available on our website, Angus Australia online catalogue or via our YouTube channel.



@stellarlivestock

Look for the Playlist for the 2025 Autumn Sale.



# UNDERSTANDING EBVs

CALVING EASE	CEDir	%	Genetic differences in the ability of a sire's calves to be born unassisted from 2 year old heifers.	Higher EBVs indicate fewer calving difficulties in 2 year old heifers.
	CEDtrs	%	Genetic differences in the ability of a sire's daughters to calve unassisted at 2 years of age.	Higher EBVs indicate fewer calving difficulties in 2 year old heifers.
	GL	days	Genetic differences between animals in the length of time from the date of conception to the birth of the calf.	Lower EBVs indicate shorter gestation length.
	BW	kg	Genetic differences between animals in calf weight at birth.	Lower EBVs indicate lighter birth weight.
GROWTH	200	kg	Genetic differences between animals in live weight at 200 days of age due to genetics for growth.	Higher EBVs indicate heavier live weight.
	400	kg	Genetic differences between animals in live weight at 400 days of age.	Higher EBVs indicate heavier live weight.
	600	kg	Genetic differences between animals in live weight at 600 days of age.	Higher EBVs indicate heavier live weight.
MATERNAL	MCW	kg	Genetic differences between animals in live weight of cows at 5 years of age.	Higher EBVs indicate heavier mature weight.
	MBC	score	Genetic differences between animals in the body condition of mature females.	Higher EBVs indicate more body condition of mature females.
	MCH	cm	Genetic differences between animals in the height of mature females.	Higher EBVs indicate taller mature females.
	Milk	kg	Genetic differences between animals in live weight at 200 days of age due to the maternal contribution of its dam.	Higher EBVs indicate heavier live weight.
FERTILITY	SS	cm	Genetic differences between animals in scrotal circumference at 400 days of age.	Higher EBVs indicate larger scrotal circumference.
	DTC	days	Genetic differences between animals in the time from the start of the joining period (i.e. when the female is introduced to a bull) until subsequent calving.	Lower EBVs indicate shorter time to calving.
CARCASE	CWT	kg	Genetic differences between animals in hot standard carcass weight at 750 days of age.	Higher EBVs indicate heavier carcass weight.
	EMA	cm <sup>2</sup>	Genetic differences between animals in eye muscle area at the 12/13th rib site in a 400kg carcass.	Higher EBVs indicate larger eye muscle area.
	Rib	mm	Genetic differences between animals in fat depth at the 12/13th rib site in a 400kg carcass.	Higher EBVs indicate more fat.
	P8	mm	Genetic differences between animals in fat depth at the P8 rump site in a 400kg carcass.	Higher EBVs indicate more fat.
	RBV	%	Genetic differences between animals in boned out saleable meat from a 400kg carcass.	Higher EBVs indicate higher yield.
	IMF	%	Genetic differences between animals in intramuscular fat (marbling) at the 12/13th rib site in a 400kg carcass.	Higher EBVs indicate more intramuscular fat.
FEED/TEMP	NFI-F	kg/day	Genetic differences between animals in feed intake at a standard weight and rate of weight gain when animals are in a feedlot finishing phase.	Lower EBVs indicate more feed efficiency.
	DOC	score	Genetic differences between animals in temperament.	Higher EBVs indicate better temperament.
STRUCTURAL	CLAW	score	Genetic differences in claw set structure (shape and evenness of claws).	Lower EBVs indicate less curl of the claw set.
	ANGLE	score	Genetic differences in foot angle (strength of pastern, depth of heel).	Lower EBVs indicate more heel depth.
	LEG	score	Genetic differences in rear leg structure when viewed from the side (angle at front of the hock).	Lower EBVs indicate a less angular leg angle.
INDEX	\$A	\$	Genetic differences between animals in net profitability per cow joined in a typical commercial self replacing herd using Angus bulls. This selection index is not specific to a particular market end-point, but identifies animals that will improve overall net profitability in the majority of commercial, self replacing, grass and grain finishing beef production systems.	Higher selection indexes indicate greater profitability.

# TACE - MID FEBRUARY 2025 REFERENCE TABLES



BREED AVERAGE EBVS																																							
CALVING EASE					GROWTH					MATERNAL					FERTILITY					CARCASS					TEMP					STRUCTURAL					SELECTION INDEX				
CEdir	CEdtrs	GL	BW	200	400	600	MCW	MBC	MCH	Milk	SS	DTC	CWT	EMA	Rib	P8	RFY	IMF	DOC	CLAW	ANGLE	LEG	\$A	\$D	\$GN	\$G	\$T												
Average	+2.3	+3.1	-4.6	+3.9	+52	+94	+103	+0.29	+8.3	+17	+2.2	-4.9	+69	+6.6	+0.1	-0.2	+0.4	+2.5	+21	+0.84	+0.96	+1.02	+206	+171	+273	+191	+189												

PERCENTILE BANDS TABLE																																								
% Band	CALVING EASE					GROWTH					MATERNAL					FERTILITY					CARCASS					TEMP					STRUCTURAL					SELECTION INDEX				
	Less Calving Difficulty	Less Calving Difficulty	Shorter Gestation Length	Lighter Birth Weight	Heavier Live Weight	200	400	600	Heavier Live Weight	Heavier Mature Weight	Heavier Live Weight	Taller Mature Height	More Body Condition	More Live Weight	Milk	SS	Shorter Time to Calving	Heavier Carcass Weight	Larger Carcass Weight	EMA	Rib	P8	Higher Yield	More IMF	More Docile	Less Curf	More Heel Depth	Less Angular	Greater Profit	Greater Profit	Greater Profit	Greater Profit	Greater Profit							
1	+10.5	+10.3	-10.5	-0.4	+72	+126	+165	+166	+165	+145	+145	+11.7	+0.64	+13.3	+30	+5.1	-9.1	+102	+15.0	+4.4	+5.4	+2.0	+6.2	+46	+0.42	+0.60	+0.70	+283	+239	+376	+272	+242								
5	+8.8	+8.7	-8.7	+0.9	+66	+116	+151	+145	+145	+11.7	+26	+4.1	-7.7	+91	+12.3	+3.0	+3.6	+1.5	+5.1	+38	+0.54	+0.70	+0.80	+262	+219	+348	+249	+228												
10	+7.7	+7.7	-7.7	+1.6	+63	+111	+144	+135	+10.9	+24	+3.7	-7.1	+86	+10.9	+2.3	+2.7	+1.2	+4.5	+34	+0.60	+0.76	+0.86	+250	+208	+332	+236	+220													
15	+6.8	+7.0	-7.1	+2.1	+60	+107	+139	+128	+10.4	+22	+3.3	-6.6	+83	+10.0	+1.8	+2.1	+1.1	+4.1	+31	+0.64	+0.80	+0.88	+242	+201	+322	+228	+215													
20	+6.2	+6.4	-6.6	+2.5	+59	+105	+136	+123	+10.4	+21	+3.1	-6.3	+80	+9.3	+1.5	+1.6	+0.9	+3.8	+29	+0.68	+0.82	+0.92	+236	+196	+313	+221	+210													
25	+5.6	+5.9	-6.2	+2.8	+57	+102	+133	+119	+10.4	+20	+2.9	-6	+78	+8.7	+1.2	+1.3	+0.8	+3.5	+27	+0.72	+0.86	+0.94	+231	+191	+306	+216	+207													
30	+5.0	+5.4	-5.8	+3.0	+56	+100	+130	+115	+10.4	+20	+2.7	-5.7	+76	+8.2	+0.9	+0.9	+0.7	+3.3	+26	+0.74	+0.88	+0.96	+226	+187	+299	+211	+203													
35	+4.5	+4.9	-5.5	+3.3	+55	+98	+127	+112	+10.4	+19	+2.6	-5.5	+74	+7.7	+0.7	+0.6	+0.6	+3.0	+25	+0.76	+0.90	+0.96	+221	+183	+293	+206	+200													
40	+4.0	+4.5	-5.2	+3.5	+54	+97	+125	+108	+10.4	+18	+2.4	-5.3	+72	+7.3	+0.5	+0.3	+0.6	+2.8	+23	+0.78	+0.92	+0.98	+217	+179	+287	+201	+197													
45	+3.4	+4.0	-4.8	+3.7	+53	+95	+123	+105	+10.4	+18	+2.3	-5.1	+71	+6.8	+0.2	+0.0	+0.5	+2.6	+22	+0.82	+0.94	+1.00	+213	+176	+281	+197	+194													
50	+2.9	+3.6	-4.5	+3.9	+52	+94	+121	+102	+10.4	+17	+2.2	-4.8	+69	+6.4	+0.0	-0.2	+0.4	+2.4	+21	+0.84	+0.96	+1.02	+209	+172	+275	+192	+191													
55	+2.3	+3.1	-4.2	+4.1	+51	+92	+119	+99	+10.4	+17	+2.1	-4.7	+67	+6.1	-0.2	-0.5	+0.3	+2.2	+20	+0.86	+0.98	+1.04	+205	+169	+270	+188	+188													
60	+1.8	+2.6	-3.9	+4.3	+50	+90	+116	+96	+10.4	+16	+1.9	-4.4	+66	+5.7	-0.4	-0.8	+0.2	+2.0	+19	+0.88	+1.00	+1.04	+200	+165	+264	+183	+185													
65	+1.1	+2.1	-3.6	+4.5	+49	+89	+114	+93	+10.4	+15	+1.8	-4.2	+64	+5.3	-0.6	-1.1	+0.1	+1.8	+17	+0.90	+1.02	+1.06	+196	+161	+257	+179	+182													
70	+0.4	+1.6	-3.3	+4.8	+48	+87	+112	+90	+10.4	+15	+1.6	-4	+62	+4.8	-0.8	-1.4	+0.0	+1.6	+16	+0.94	+1.04	+1.08	+190	+156	+250	+173	+178													
75	-0.3	+0.9	-2.9	+5.0	+46	+85	+109	+86	+10.4	+14	+1.5	-3.8	+60	+4.4	-1.1	-1.7	-0.1	+1.4	+15	+0.96	+1.06	+1.10	+185	+152	+243	+167	+174													
80	-1.2	+0.2	-2.5	+5.3	+45	+83	+106	+82	+10.4	+13	+1.3	-3.5	+58	+3.9	-1.4	-2.1	-0.2	+1.2	+13	+1.00	+1.10	+1.12	+178	+146	+234	+161	+170													
85	-2.3	-0.7	-2	+5.7	+43	+80	+102	+78	+10.4	+12	+1.1	-3.2	+55	+3.2	-1.7	-2.5	-0.3	+0.9	+12	+1.04	+1.12	+1.14	+170	+139	+223	+152	+164													
90	-3.9	-1.9	-1.5	+6.1	+41	+77	+98	+71	+10.4	+11	+0.9	-2.7	+52	+2.4	-2.1	-3.1	-0.5	+0.6	+9	+1.08	+1.18	+1.18	+169	+131	+209	+142	+156													
95	-6.3	-3.9	-0.5	+6.8	+38	+72	+91	+62	+10.4	+9	+0.5	-2.1	+46	+1.2	-2.8	-4	-0.8	+0.1	+6	+1.16	+1.24	+1.24	+143	+117	+188	+125	+144													
99	-11.5	-8.2	+1.5	+8.2	+31	+61	+76	+43	+10.4	+6	-0.4	-0.7	+35	-1.3	-4.2	-5.8	-1.3	-0.8	-1	+1.30	+1.38	+1.32	+110	+90	+146	+95	+119													

Breed average and percentile bands represents the average EBV of all 2023 drop Australian Angus and Angus-influenced seedstock animals analysed in the Mid February 2025 TACE

# NATIONAL VENDOR DECLARATION (CATTLE) AND WAYBILL - eNVD

C0720 42018118

*This form cannot be used where eligibility for the EU market is required.*

## Part A To be completed by the owner or person who is responsible for the husbandry of the cattle.

Owner of cattle Stellar Livestock (FULL TRADING NAME)

Property/place where the journey commenced 75 Young Lane (ADDRESS)

MUDGEONGA (TOWNSUBURB) VIC (STATE)

Property Identification Code (PIC) of this property 3ALDU170  
This MUST be the PIC of the property that the stock is being moved from

### Description of cattle

Number	Description (BREED, SEX, E.G. HEREFORD CROSS STEERS)	Brands or Earmarks (IF PRESENT OR REQUIRED)
35	ANGUS x ANGUS - Bull : M	
35	Total	

Use the Attachment Forms for consignments that require more lines to describe the stock. (See Explanatory Notes)

### Consigned to VARIOUS

(NAME OF PERSON OR BUSINESS)

(ADDRESS) \_\_\_\_\_ (TOWNSUBURB) \_\_\_\_\_ (STATE)

Destination (if different) of cattle VARIOUS: \_\_\_\_\_ (LOCATION/ADDRESS)

Destination PIC (REQ: WA & TAS) \_\_\_\_\_

NLIS devices used on these cattle 39 Number of rumen devices \_\_\_\_\_

Health (Cattle) 42018117 AHA \_\_\_\_\_ OFFICE OF ISSUE \_\_\_\_\_ / \_\_\_\_\_ / \_\_\_\_\_ EXPIRY DATE

- Have any of the cattle in this consignment ever in their lives been treated with a hormonal growth promotant (HGP)? (Use a second document for mixed consignments.)  
Yes  No
- Have the cattle in this consignment ever in their lives been fed feed containing animal fats?  
Yes  No  (See Explanatory Notes)
- Has the owner stated above owned these cattle since their birth?  
Yes  No  If No, how long were the cattle obtained or purchased? (If purchased at different times, tick the box corresponding to the time of the most recent purchase.)  
A. Less than 2 months  B. 2-6 months  C. 6-12 months  D. more than 12 months
- In the past 60 days, have any of these cattle been fed by-product stock feeds?  
Yes  No  If Yes, attach a list of the by-product stock feeds, date when last fed and a copy of an analyst's report if available.

**5** In the past 6 months have any of these animals been on a property listed on the ERP database or placed under any restrictions because of chemical residues?  
Yes  No  If Yes, give details: \_\_\_\_\_

**6** Are any of the cattle in this consignment still within a Withholding Period (WHP) or Export Slaughter Interval (ESI) as set by APVMA or SAFE MEAT, following treatment with any veterinary drug or chemical?  
Yes  No  If Yes, give details: (Record additional details in question 9)  
Nitrorem 03/02/2025 DATE APPLIED 56 WHP 120 ESI (IF SET)

**7** In the past 60 days, have any of the cattle in this consignment consumed any material that was still within a withholding period when harvested, collected or first grazed?  
Yes  No  If Yes, give details: \_\_\_\_\_  
GRAZING WHP \_\_\_\_\_ / \_\_\_\_\_ / \_\_\_\_\_ DATE FIRST FED/GRAZED \_\_\_\_\_ / \_\_\_\_\_ / \_\_\_\_\_ DATE FEEDING/GRAZING CEASED \_\_\_\_\_ / \_\_\_\_\_ / \_\_\_\_\_

**8** In the past 42 days, were any of these cattle  
a) grazed in a spray risk area; or  
b) fed fodder cut from a spray drift risk area? (See Explanatory Notes for definition of spray drift risk area.)  
Yes  No  If Yes, Date sprayed: \_\_\_\_\_ / \_\_\_\_\_ / \_\_\_\_\_

**9** Please include any additional information below  
eg: vaccination programs, animal health certification, additional declarations, etc.  
\_\_\_\_\_  
\_\_\_\_\_

### Declaration

**I** Julian Carroll 75 Young Lane MUDGEONGA VIC  
FULL NAME ADDRESS FULL ADDRESS VIC  
ADDRESS CONT.

I declare that, I am the owner or the person responsible for the husbandry of the cattle and that all the information in part A of this document is true and correct. I also declare that I have read and understood all the questions that I have answered, that I have read and understood the explanatory notes, and that, while under my control, the cattle were not fed restricted animal material (including meat and bone meal) in breach of State or Territory legislation.

Signature\* *Julian Carroll* Date\* 16/02/2025  
\*Only the person whose name appears above may sign this declaration, or make amendments which must be initialled.

Tel no. 0418331311 Fax no. \_\_\_\_\_  
Email julian@stellarlivestock.com.au

**Part B To be completed by the person in charge of the cattle while they are being moved.**  
Completion of this part is optional in SA and VIC.

Movement commenced: \_\_\_\_\_ / \_\_\_\_\_ / \_\_\_\_\_ (am/pm)  
Vehicle registration number(s)\*: \_\_\_\_\_

I \_\_\_\_\_ am the person in charge of the cattle during the movement and declare all the information in Part B is true and correct.

Signature \_\_\_\_\_ Date \_\_\_\_\_ / \_\_\_\_\_ / \_\_\_\_\_ Tel no. \_\_\_\_\_  
\*When more than one truck is carrying the cattle, other vehicle registration numbers are to be recorded.

# NATIONAL CATTLE HEALTH DECLARATION

**Property Identification Code (PIC) of this property**  
This MUST be the PIC of the property that the stock is being moved from

**3ALDU170**

**Attached to accompanying NVD/Waybill No.**

**42018118**

**No. of cattle in consignment** 39

## Biosecurity and health information

- Has the owner owned all the cattle in this consignment since birth? Y  N
- Does the property of origin have a completed on-farm biosecurity plan? Y  N
- Have these cattle been tested for the presence of bovine viral diarrhoea virus (BVDV, pestivirus)?  
If tested, were any cattle found to be persistently infected? Y  N  Y  N
- Have these cattle been tested for the presence of BVDV (pestivirus) antibody?  
Test results Y  N
- Has the source herd had a test for Johne's disease (JD)? Y  N   
If so, which test? Check Test  Sample Test  HEC Test (dairy only)   
Was the result negative? Y  N  Pending  Date / /
- Has the property of origin had an occurrence of clinical JD in any species in the past five years? Y  N  Unsure   
JD/DS of ..... JBAS of .....
- BEEF CATTLE: On the property of origin, have cattle been co-grazed with dairy cattle? Y  N  Unsure   
See explanatory note for advice on co-grazing with non-bovine species
- Any other relevant health information

## Treatments

Treatment for	Product name and type (e.g., pour-on, drench)	Date of treatment within last 6 months
Parasites	Nitromec	03 / 02 / 2025
Ticks	/	/
Pain relief	/	/
Other treatments	/	/

## Current vaccinations for the cattle being moved (see explanatory note)

Clostridial (e.g. 5 in 1):	Y <input checked="" type="checkbox"/>	Date	03 / 02 / 2025
Leptospira (e.g. 7 in 1):	Y <input checked="" type="checkbox"/>	Date	03 / 02 / 2025
Pestivirus:	Y <input checked="" type="checkbox"/>	Date	03 / 02 / 2025
JD (Silirum):	Y <input type="checkbox"/>	Date	/ /
Botulism:	Y <input type="checkbox"/>	Date	/ /
Bovine ephemeral fever:	Y <input type="checkbox"/>	Date	/ /
Tick fever:	Y <input type="checkbox"/>	Date	/ /
Vibrio:	Y <input checked="" type="checkbox"/>	Date	03 / 03 / 2025
Other vaccinations (specify):		Date	/ /

## Declaration (see explanatory notes for further information)

I, Julian Carroll (Full name) 75 Young Lane  
MUDGEONGA VIC 3737 (Town/suburb) (State) (Postcode)  
 (Address)

declare that I am the owner or the person responsible for the husbandry of the cattle and that all the information in this document is true and correct. I also declare that I have read and understood all the questions that I have answered, that I have read and understood the explanatory notes, and that I have inspected the animals and deem them to be healthy, free of signs of disease and fit to travel.

Signature\* 

Date 15 / 02 / 25

\*Only the person whose name appears above may sign this declaration, or make amendments which must be initiated

Tel. No. ( ) 0418331311

Email julian@stellariivestock.com.au



## STELLAR QUICKSILVER Q7

Quicksilver is an exciting AI sire bred by Stellar Livestock.

An IMF ebv of **+5.4** might be what gets him noticed, but this bull has many strings to his bow including a heap of traits in the top 10% of the breed.

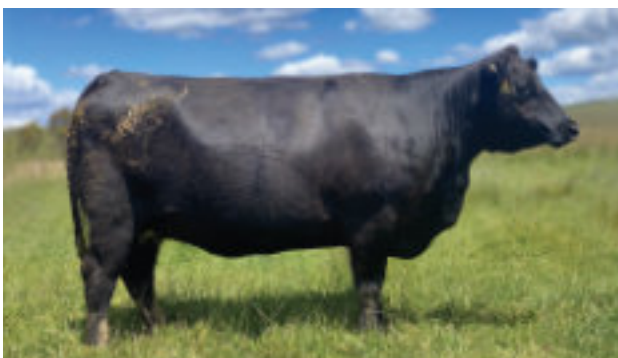
In the paddock, he combines breed average Birthweight with impressive 200 and 400 Day weights. Importantly, he does this efficiently with a moderate Mature Cow Weight around +100.

On the carcass front, he combines leading IMF with massive Eye Muscle Area and big carcass weight.

Few bulls with this combination of performance do it on such sound structural EBVs: Quicksilver has Foot Angle in the 7th percentile and good claw and leg rankings.

And, let's not forget his beautiful temperament.

**Stellar Quicksilver Q7 is available exclusively from Alta Genetics Australia.**



DAM: STELLAR VICKY N9 (JCAN9)



QUICKSILVER SON 2YO - JCA21S40



Peter Godbolt 0457 591 929  
Dan Ivone 0427 480 548



## ENQUIRIES

Julian Carroll

0418 331 311

[julian@stellarlivestock.com.au](mailto:julian@stellarlivestock.com.au)

## LOCATION

### Stellar Livestock Cattle Yards

Myrtleford-Yackandandah Rd,  
Mudgegonga VIC

From Myrtleford: Yard entry is on the right 80m after Young Lane.

From Yackandandah: Yard entry is on the left 1.7kms after Mudgegonga Hall & CFA shed.

